



BOSCH

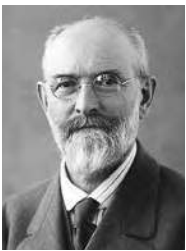
Invented for life

Freestanding Appliances

2019



Who are Bosch?



“I have always acted according to the principle that it is better to lose money than trust. The integrity of my promises, the belief in the value of my products and in my word of honour have always had a higher priority to me than a transitory profit.”

Robert Bosch, 1921

For over 125 years, the Bosch name has been synonymous with engineering excellence. Our home appliances are renowned for their quality, reliability and performance which derives from our inherent, unflagging commitment and the painstaking thoroughness with which every unit is made. As you would expect from Bosch, there are no gimmicks or frills with our products – just pure, clean lines and beautiful, functional simplicity that will enhance any kitchen.

The values that shaped Robert Bosch’s vision for his new company in 1886 are the same principles that guide the business today; never lose the trust of your customers, look after your staff and partners and change things for the better. It’s what has kept Bosch at the forefront of the home appliance industry and what will keep it there in the future.

Follow us to learn more on:

 BoschHomeUK

 BoschHomeUK

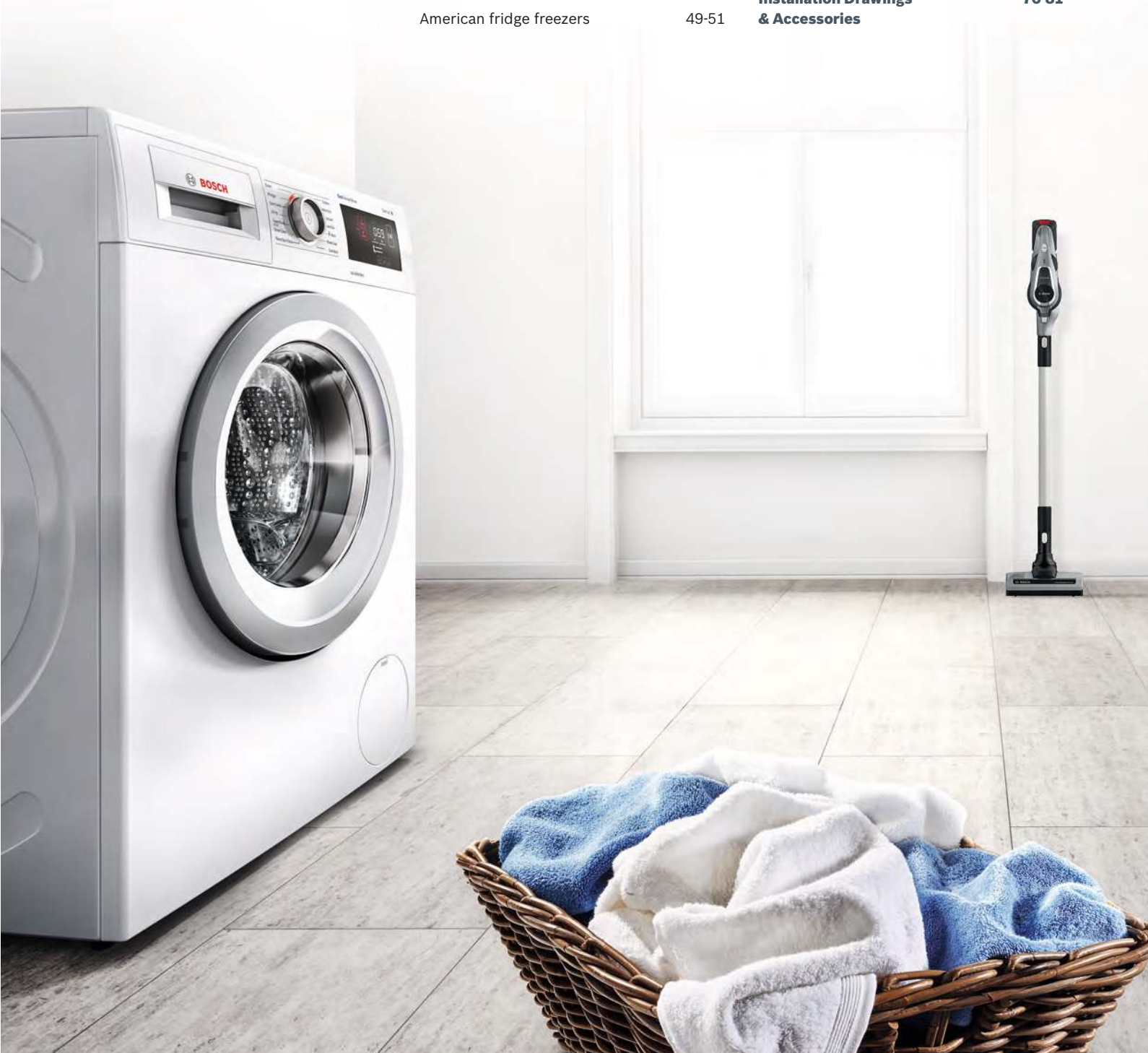
 BoschHomeUK

 BoschAppliancesUK

 boschhomeuk

Contents

Customer service	2-3	Dishwashers	22-30	Small appliances	52-75
Home Connect	4-7	Introducing the Bosch dishwasher range	22-26	Introducing the Bosch small appliance range	52-53
Home Laundry	8-21	60cm dishwashers	27-29	Vacuum cleaners	54-58
Introducing the Bosch laundry range	8-9	Slimline dishwashers	30	Food preparation	59-63
Washing machines	10-16	Refrigeration	31-51	Handheld blenders	64
Washer dryers	17	Introducing the Bosch refrigeration range	31-36	Hand mixers	65
Tumble dryers	18-21	Fridge freezers	37-43	Kettles & toasters	66-68
		Fridges	44-45	Tassimo coffee machines	69-70
		Fridges & freezers	46-47	Microwaves	71
		Undercounters & wine cooler	48	Steam generator irons	72-75
		American fridge freezers	49-51	Installation Drawings & Accessories	76-81



Looking for help? You'll find it here.

For help with your home appliance,
trust Bosch Home Appliances Service.

Arrange an engineer visit.

Our appliances are manufactured to the highest standards, but if you do need a visit from an engineer we are here to help. We have teams of locally based engineers around the country – employed and trained by Bosch*. This gives them unrivalled expertise and knowledge of our appliances. We repair appliances both in and out of guarantee. All repairs are analysed in advance by a technical team so that the parts likely to be needed to complete the repair are sent to the engineer's van the night before the visit.

To arrange an engineer visit to your home please call:

0344 892 8979

Calls are charged at the basic rate, please check with your telephone service provider for exact charges.

You can also arrange an engineer visit online: **www.bosch-home.co.uk/customer-service/book-a-repair-online**

Product advice.

If you need help using programmes or features, or need assistance selecting a new Bosch appliance from our current range, our product advice team can help.

You can call us on

0344 892 8979

or visit: **www.bosch-home.co.uk** for frequently asked questions and helpful videos.

Register my appliance

We advise that you register your appliances so that we can contact you about any product updates. Visit **www.registermyappliance.org.uk** for more information.

You can also call Bosch directly to register your appliance on **0344 892 8979** (option 5). Please call us within 28 days of purchase to discuss the full range of options for extending your warranty.

Visit the Bosch online store.

Find a comprehensive selection of accessories to help you get the most out of your appliance, along with our full range of replacement spare parts and cleaning and care products at the Bosch online store.

You can also purchase Tassimo hot drinks machines, vacuum cleaners, irons, steam stations, kettles, toasters and food preparation appliances directly from us online.



You can call us on

0344 892 8979

or visit: **www.bosch-home.co.uk/store**

Accessories.

Many appliances can be enhanced with optional extras, such as telescopic rails for ovens or special cookware for hobs.

When buying a Bosch home appliance, you know you are purchasing a quality, reliable product. However many appliances are used daily, so need cleaning and maintaining to keep them looking great and operating at peak performance.

Our cleaning and care products have been thoroughly tested and approved for safe and effective use on your Bosch home appliance.

Replacement spare parts.

We keep in stock a comprehensive range of replacement spare parts for our appliances for up to ten years. All our parts are original spare parts, not copies.

High quality service.

Bosch appliances are renowned for their quality and we believe that our customers deserve exceptional customer service. You can contact us seven days a week for assistance.

Calls will be answered

**Monday to Friday 8am to 8pm,
Saturday 9am to 5pm and
Sunday 9am to 4pm.**

*In some areas we may use an approved service partner. The process may vary for repairs carried out by our service partners.



Home connect

From controlling your Home Connect Serie 8 oven with your voice using Amazon Alexa, to never running out of dishwasher tablets again, thanks to the Amazon Dash Replenishment Service*. Smart appliances mean less things to think about, more time to spend on something else. Bosch Home Appliances with Home Connect ensure your home is ready for the future today.

How you can use your Home Connect App.

Oven	Washer & dryer	Fridge freezers	Dishwasher	Fully automatic coffee machine	Hob & hoods	Services
Seasonal recipe specials	Easy start	Smart storage guide/ object recognition	One step reordering	Coffee playlist	Filter saturation & replacement	Tips & tricks
Grocery Information	Additional stain Programs	Camera in the fridge	Machine care program	Coffee world	Hob-hood control	User manual
Recipe filters	Adjust washing time - MyTime	Grocery information	Tab counter	MyCoffee	Remote setting & monitoring	Accessories
			Easy start		Dishes, receipes	Online shop



Home Connect is a service offered by Home Connect GmbH.
For more information on Home Connect please visit www.bosch-home.co.uk

* Set up of Amazon Dash Replenishment Service is required.

Explore more at www.bosch-home.co.uk

In partnership with:



Voice control services based on Amazon Alexa will allow you to connect and control your appliances in your home simply by speaking to Alexa. Along with the ability to use Alexa with many other partners from Philips Hue, Spotify and IFTTT, the possibilities are endless.

Once Home Connect skills are set up you can control your oven, dishwasher, coffee machine and washing machine. All you'll need to do, is simply ask: **“Alexa, start Home Connect Oven”** or **“Alexa, tell Home Connect Oven to start”**. Alexa will then continue to guide you through.

Perfect for those moments when you've got your hands full!



Home Connect partnerships.



The easy way into family cooking, creating time spent together as a family.



Removing appliances from your daily routines by making them do the work for you.



Monitor and receive notifications on all of your Home Connect appliances through your FitBit.

Making **life easy** through innovative technologies

Smart connectivity for an easier life.

The future has arrived and it's knocking on your front door. Home Connect brings smart technology to your appliances and lets you control them with your phone or tablet.

So, whether you want to turn the oven on to cook your dinner when you're on your way home, or check what's in your fridge while you're at the shops, you'll be in complete control.

Simple to set up, simple to use.

There's no need to worry if you're not a technical genius. We've made sure Home Connect is simple and straightforward to set up. We've even made videos that will take you through the process and get you up and running in just a couple of minutes.

You'll find the Home Connect app just as easy to use. There are lots of pre-set options to get you started quickly, and everything is set out logically and clearly.

Relax – we're invented for life.

Home Connect uses the same security protocol as online banking so you can enjoy extra peace of mind when you're using your Bosch appliances. Our app has TUV Trusted App certification, and all of our Home Connect appliances are Wi-Fi certified by the Wi-Fi Alliance.



Check the food in your fridge, before check out.

Thanks to Home Connect, you can now check the contents of your fridge at any given time and place. Interior door cameras take pictures every time the door is closed, and conveniently sends them to your mobile device. Wherever you are, simply access your Home Connect app to get a perfect overview of what's in your fridge. Never forget the milk again.



The fridge that helps you organise.

Not sure how to store your fruit and vegetables? Your fridge has the answers. With Object Recognition, our Home Connect fridge will suggest the best place within the fridge to store your fruit and veg products, keeping them fresher for longer. You can even explore recipes to help you use up those left over items. (On selected appliances)

How you can use your Home Connect App.

Let us choose the best wash for you.

To stay at their best, different clothes need to be washed in different ways. With the Bosch Home Connect app, simply tell your washing machine what's in the load and it'll work out the perfect program. It'll even tell you if there's an item that should come out and be washed a different way.



Tablet top up

Amazon Dash Replenishment will automatically reorder your dishwasher tablets when your supply is running low. Simply activate Dash Replenishment in the Home Connect app and regain time spent shopping for supplies, as tablets will be automatically delivered to your doorstep. Another thing crossed off your to-do list.

Recipes

Meal planning has never been easier. Browse the Home Connect Recipe Book from your favourite armchair. When you've made your choice, simply send all the settings from the app directly to your oven so it's ready to go when you are.

The range of recipes are all tried and tested by Bosch Home Economists around the world, so you'll find exciting new flavours alongside old family favourites. New and seasonal recipes are added on a regular basis, so you'll never be stuck for what to eat.



Remote Delayed start

Want your dinner ready when you arrive home? That's no problem with Home Connect. Simply put your food in the oven before you go out and set the oven to start later in the day so it's ready just as you come back through the front door.

But what if you're delayed while you're out? That's fine. You can simply adjust the start time from wherever you are and, if the food has already started cooking, you can simply press "pause". The oven will lower the temperature until you start it again so your meal isn't ruined.

Introducing the Bosch laundry range.

Energy and water-saving technologies across our latest laundry appliances give you peace of mind when washing and drying your clothes. To help you choose the right appliance, we have divided them into three categories.

Serie 8 +++

Perfection in every detail, our **Serie 8** range of laundry appliances stands out from the crowd with superior quality, results and first-class design. Discover cutting-edge features and extras such as **i-DOS** automatic dosing in our washing machines and **ActiveOxygen™** for hygienic washing at low temperatures. Monitor and control your wash remotely with our **Home Connect** models, developed to give you complete control over your laundry.

Serie 6 ++

Our **Serie 6** models strive for sustainability and appreciate the active lifestyle of you and your family. Appliances in this range offer you real benefits and energy-efficient features combined with timeless design. **i-DOS** doses each load with millilitre precision, which not only delivers outstanding results but a host of savings. While **Night Wash** allows you to take advantage of evening tariffs and won't disturb you.

Serie 4 +

Easy to operate with family life in mind, our **Serie 4** range truly understands your requirements. Practical and straightforward to use, these appliances combine easy operation with stylish design. With **Reload** function, which allows you to open the whole door throughout the cycle so you can add or remove items of any size.

Laundry functions explained.

(Check model for available functions)



WaveDrum

Select the programme for your wash and the droplet-shaped drum structure and asymmetrical paddles adjust the drum movements to powerful or gentle.



EcoSilence Drive

Bosch EcoSilence Drive washing machines come with a 10-year guarantee.



Aqua Stop

This security gives you peace of mind that the water will stop in the unlikely event of a leak.



iDOS

iDOS automatically senses exactly the right amount of detergent and water to use, as well as the correct temperature, whatever your load, adapting to the fabrics, level of soiling and weight of the load.



ActiveOxygen

This clever system cleans your most delicate fabrics at low washing temperatures, protecting their colour while eliminating 99.99% of the bacteria and germs found in clothes, without the use of any chemical additives.



Reload

Simply pause the cycle and the machine will automatically adjust the water. This allows you to add or remove items of any size to your wash.



Time Delay

Have your laundry ready when you need it. Just delay the start of your programme with one simple button.



AntiVibration Design

A spiral design on the side of the washing machine that increases stability and reduces vibration. This makes for a quieter machine with improved sound dampening.



Capacity

Our Free-standing washing machines have a drum capacity of up to 9kg, perfect for those busy households.

Model shown: WAT286H0GB

Explore more at www.bosch-home.co.uk

Making **life easy** through innovative technologies

Washing machines

Never miss an item again. Reload by Bosch.

For dropped socks, mistaken items with your whites or forgotten clothes, **Reload** function on Bosch washing machines allows you to add or remove clothing of any size to your washes. Simply pause the cycle and the machine will automatically adjust the water level to allow you to open the door. Reload your items and restart the wash.



Bosch integrated technology for a peaceful washing experience.

Enjoy the quiet life.

Our latest washing machines with **EcoSilence Drive™** generate a noise level of just 41 decibels – that's quieter than the sound of the sea at 55 decibels. The modern world is noisy enough, so it's good to know that Bosch technology can help make the home environment a little oasis of calm.

Less rock and roll.

We've also created **AntiVibration** technology to cut down noise. The sidewalls of the washing machine feature a spiral design that increases stability and reduces vibrations. Improved sound insulation and low noise shock absorbers further dampen the noise to provide a whisper-quiet machine.

Silent night.

The special **Night Wash** programme makes washing machines some of the quietest. The function reduces the high spin speed during the spin cycle so you can do your washing while everyone is sleeping without disturbing your family.



Everything's just right with i-DOS.

i-DOS

Too much detergent or too little can lead to poor washing results. i-DOS automatically senses exactly the right amount of detergent and water to use, as well as the correct temperature, whatever your load.

The perfect dose every time.

It's easier than you might think to get the detergent dose wrong when doing the laundry. Thanks to **i-DOS**, it's no longer a worry. The **automatic dosing system** from Bosch uses the optimum amount of detergent for every wash whatever the size of your load.



Too much? Too little? Just right with i-DOS.

Once activated, the i-DOS system measures the detergent automatically, to the nearest millilitre. Sensors inside the washing machine detect the type of fabric, the load volume in the drum and the degree of soiling, and adjust the detergent to the optimum dose accordingly. In this way, you'll achieve the best results for your clothes, whilst **saving detergent and water**.

Too much.

Using too much detergent – even by a little – leads to **significantly higher** water and energy consumption when washing. Visible detergent residues can be left on clothing, which can trigger skin irritation and allergies.

Too little.

Using too little detergent can lead to **poorer washing results**. Stains won't be completely removed and could be left on clothes permanently. Insufficient detergent can also result in discolouration and unpleasant odours.

The right setting for the load. Makes perfect sense.

Whether it's a quick sports wash or a full weekly load, sensors within the automatic dosing system determine the amount and type of clothes within each load and set the correct temperature and amount of detergent required for perfect results.

To stay at their best, different clothes need to be washed in different ways. With the Bosch Home Connect app, simply tell your washing machine what’s in the load and it’ll work out the perfect program. It’ll even tell you if there’s an item that should come out and be washed a different way.

Serie 8+++

WAX32GH1GB Available from September 2019



TYPE	WASHER
DESIGN FAMILY	SERIE 8
MODEL	WAX32GH1GB
KEY FEATURES	
Home Connect	●
i-DOS detergent dosing system	-
ActiveOxygen	-
EcoSilence Drive	●
EcoBar+/EcoBar	●/-
VarioPerfect / Intensive plus and SpeedPerfect	-/●
AntiVibration design	●
Reload facility	●
ADDITIONAL FEATURES	
Time delay/Time Remaining	24 hours
Child lock	●
Drum interior light	●
PROGRAMMES/FUNCTIONS	
Cottons	●
Easy-care programme	●
Wool programme	●
Delicates/Silk	●
Rinse/Spin	●
Memory programmes	●
Auto Programme	-
Auto stains removal	●
Super Quick 15 /Super Quick 15/30	-/●
Sportswear	●
AllergyPlus	●
Dark Wash/EasyCare plus	-/●
Mixed Load	●
Night Wash	●
Shirts and blouses	●
Reduced Ironing	●
Aqua Plus/Extra Rinse	●/-
Pre Wash	●
Variable Temperature/Variable Spin	●
Drum Clean	●
PERFORMANCE / TECHNICAL INFORMATION	
Energy efficiency class	A+++
Capacity cotton (kg)	10.0
Maximum spin speed (rpm)	1600
Washing performance class	A
Spin drying performance class	A
Energy consumption annual (kWh/annum)	-
10% more economical than the standard value	-
20% more economical than the standard value	●
30% more economical than the standard value	-
Water consumption annual (l/annum)	-
Noise level washing (dB(A) re 1 pW)	49
Noise level spinning (dB(A) re 1 pW)	75
Dimensions of the product (cm)	85.0 x 60.0 x 59.0

● = Yes - = No
Cottons 60+ecoPerfect and Cottons 40/60+ ecoPerfect are the standard washing programmes to which the information in the label relates. These programmes are suitable to clean normally soiled cotton laundry and are the most efficient programmes in terms of combined energy and water consumption. Annual energy and water consumption based on 220 standard wash cycles.



TYPE	WASHER	WASHER	WASHER	WASHER	WASHER	WASHER	WASHER
DESIGN FAMILY	SERIE 8	SERIE 8	SERIE 8	SERIE 8	SERIE 8	SERIE 8	SERIE 8
MODEL	WAYH8790GB	WAV28KH9GB	WAWH8660GB	WAW325H0GB	WAW285H0GB	WAV28MH9GB	WAW28750GB
KEY FEATURES							
Home Connect	●	●	●	●	●	●	-
i-DOS detergent dosing system	-	●	●	-	-	-	-
ActiveOxygen	-	-	-	-	-	-	●
EcoSilence Drive	●	●	●	●	●	●	●
EcoBar+/EcoBar	●/-	●/-	●/-	●/-	●/-	●/-	●/-
VarioPerfect / Intensive plus and SpeedPerfect	●/-	-/●	●/-	●/-	-/●	●/-	●/-
AntiVibration design	●	●	●	●	-	●	●
Reload facility	●	●	●	●	-	●	●
ADDITIONAL FEATURES							
Time delay/Time Remaining	24 hours	24 hours	24 hours	24 hours	24 hours	24 hours	24 hours
Child lock	●	●	●	●	●	●	●
Drum interior light	●	●	●	●	●	●	●
PROGRAMMES/FUNCTIONS							
Cottons	●	●	●	●	●	●	●
Easy-care programme	●	●	●	●	●	●	●
Wool programme	●	●	●	●	●	●	●
Delicates/Silk	●	●	●	●	●	●	●
Rinse/Spin	●	●	●	●	●	●	●
Memory programmes	●	-	-	-	-	-	-
Auto Programme	-	●	●	-	-	-	-
Auto stains removal	●	-	-	●	●	●	-
Super Quick 15 /Super Quick 15/30	-/●	-/●	●/-	●/-	-/●	●/-	●/-
Sportswear	●	●	●	●	●	●	●
AllergyPlus	●	●	●	●	●	●	●
Dark Wash/EasyCare plus	●	-	-	-	-	-	-
Mixed Load	●	●	●	●	●	●	●
Night Wash	●	-	●	●	●	●	●
Shirts and blouses	●	●	-	●	●	●	●
Reduced Ironing	●	-	-	●	-	●	●
Aqua Plus/Extra Rinse	●/-	●/-	●/-	●/-	-/●	●/-	●/-
Pre Wash	●	●	●	●	●	●	●
Variable Temperature/Variable Spin	●	●	●	●	●	●	●
Drum Clean	●	●	●	●	●	●	●
PERFORMANCE / TECHNICAL INFORMATION							
Energy efficiency class	A+++	A+++	A+++	A+++	A+++	A+++	A+++
Capacity cotton (kg)	9.0	9.0	9.0	9.0	9.0	9.0	9.0
Maximum spin speed (rpm)	1400	1400	1400	1600	1400	1400	1400
Washing performance class	A	A	A	A	A	A+++	A
Spin drying performance class	B	B	B	A	B	B	B
Energy consumption annual (kWh/annum)	152	-	152	152	152	-	152
10% more economical than the standard value	-	-	-	-	-	-	-
20% more economical than the standard value	-	●	-	-	-	●	-
30% more economical than the standard value	●	-	●	●	●	-	●
Water consumption annual (l/annum)	11220	-	11220	11220	11220	-	11220
Noise level washing (dB(A) re 1 pW)	47	47	47	47	47	47	47
Noise level spinning (dB(A) re 1 pW)	71	71	71	73	71	71	71
Dimensions of the product (cm)	85.0 x 60.0 x 59.0	85.0 x 60.0 x 59.0	84.5 x 60 x 59	84.5 x 60 x 59	85.0 x 60.0 x 59.0	85.0 x 60.0 x 59.0	84.5 x 60 x 59

● = Yes - = No
Cottons 60+ecoPerfect and Cottons 40/60+ ecoPerfect are the standard washing programmes to which the information in the label relates. These programmes are suitable to clean normally soiled cotton laundry and are the most efficient programmes in terms of combined energy and water consumption. Annual energy and water consumption based on 220 standard wash cycles.

Washing machines



TYPE	WASHER	WASHER	WASHER	WASHER	WASHER	WASHER	WASHER
DESIGN FAMILY	SERIE 6	SERIE 6	SERIE 6	SERIE 6	SERIE 4	SERIE 4	SERIE 4
MODEL	WAT286H0GB	WAT2840SGB	WAT28463GB	WAT24463GB	WAN28201GB	WAN28108GB	WAN24108GB
KEY FEATURES							
Home Connect	●	-	-	-	-	-	-
i-DOS detergent dosing system	●	-	-	-	-	-	-
ActiveOxygen	-	-	-	-	-	-	-
EcoSilence Drive	●	●	●	●	●	●	●
EcoBar+/EcoBar	●/-	-/●	-/●	-/●	-	-	-
VarioPerfect / Intensive plus and SpeedPerfect	●/-	●/-	●/-	●/-	●/-	●/-	●/-
AntiVibration design	●	●	●	●	●	●	●
Reload facility	●	●	●	●	●	●	●
ADDITIONAL FEATURES							
Time delay/Time Remaining	24 hours	24 hours	24 hours	24 hours	24 hours	24 hours	24 hours
Child lock	●	●	●	●	●	●	●
Drum interior light	●	-	-	-	-	-	-
PROGRAMMES/FEATURES							
Cottons	●	●	●	●	●	●	●
Easy-care programme	●	●	●	●	●	●	●
Wool programme	●	●	●	●	●	●	●
Delicates/Silk	●	●	●	●	●	●	●
Rinse/Spin	●	●	●	●	●	●	●
Memory programmes	●	-	-	-	-	-	-
Auto Programme	●	-	-	-	-	-	-
Auto stains removal	-	-	-	-	-	-	-
Super Quick 15 / Super Quick 15/30	-/●	-/●	-/●	-/●	-/●	-/●	-/●
Sportswear	-	●	●	●	●	●	●
AllergyPlus	●	●	●	●	●	●	●
Dark Wash/EasyCare plus	●	●/-	●/-	●/-	●/-	●/-	●/-
Mixed Load	●	●	●	●	●	●	●
Night Wash	-	●	●	●	-	●	●
Shirts and blouses	●	●	●	●	●	●	●
Reduced Ironing	●	●	●	●	●	●	●
Aqua Plus/Extra Rinse	●/-	●/-	●/-	●/-	●/-	●/-	●/-
Pre Wash	●	-	-	-	-	-	-
Variable Temperature/Variable Spin	●	●	●	●	●	●	●
Drum Clean	●	●	●	●	●	●	●
PERFORMANCE / TECHNICAL INFORMATION							
Energy efficiency class	A+++	A+++	A+++	A+++	A+++	A+++	A+++
Capacity cotton (kg)	9.0	9.0	9.0	9.0	8.0	8.0	8.0
Maximum spin speed (rpm)	1400	1400	1400	1200	1400	1400	1200
Washing performance class	A	A	A	A	A	A	A
Spin drying performance class	B	B	B	B	B	B	B
Energy consumption annual (kWh/annum)	152	152	152	152	176	176	176
10% more economical than the standard value	-	-	-	-	●	●	●
20% more economical than the standard value	-	-	-	-	-	-	-
30% more economical than the standard value	●	●	●	●	-	-	-
Water consumption annual (l/annum)	11200	11200	11220	11220	9900	9900	9900
Noise level washing (dB(A) re 1 pW)	48	49	49	51	55	54	54
Noise level spinning (dB(A) re 1 pW)	73	75	75	75	76	76	76
Dimensions of the product (cm)	84.8 x 59.8 x 59.1	84.8 x 59.8 x 59.0	84.8 x 59.8 x 59.0	84.8 x 59.8 x 59.0	84.8 x 59.8 x 55.0	84.8 x 59.8 x 55.0	84.8 x 59.8 x 55.0

● = Yes - = No
Cottons 60+ecoPerfect and Cottons 40/60+ ecoPerfect are the standard washing programmes to which the information in the label relates. These programmes are suitable to clean normally soiled cotton laundry and are the most efficient programmes in terms of combined energy and water consumption. Annual energy and water consumption based on 220 standard wash cycles.

All models comply with COMMISSION REGULATION (EC) No 1275/2008 with regard to ecodesign requirements for standby and off mode electric power consumption.

Explore more at www.bosch-home.co.uk

Washer dryers



TYPE	WASHER DRYER	WASHER DRYER	WASHER DRYER	WASHER DRYER	WASHER DRYER
DESIGN FAMILY	SERIE 6	SERIE 6	SERIE 6	SERIE 6	SERIE 6
MODEL	WVH28424GB	WDU28560GB	WDU28568GB	WVG30462GB	WVG30475GB
KEY FEATURES					
AirCondensation technology	●	-	-	-	-
EcoSilence Drive	●	●	●	●	●
VarioPerfect	●	●	●	●	●
Reload facility	●	●	●	●	●
AutoDry function	●	●	●	●	●
Self cleaning condenser	●	●	●	-	-
ADDITIONAL FEATURES					
Time delay/Time Remaining	24 hours	●	●	24 hours	24 hours
Child safety lock	●	●	●	●	●
Water protection system	AquaSecure	Multiple water protection	Multiple water protection	Multiple water protection	Multiple water protection
PROGRAMMES					
Cottons	●	●	●	●	●
Easy-care programme	●	●	●	●	●
Wool programme	●	●	●	●	●
Delicates / Silk	●	●	●	●	●
Intensive Dry	●	●	●	●	●
Gentle Dry	●	●	●	●	●
Rinse / Spin	●	●	●	●	●
Automatic drying programme	●	●	●	●	●
Memory	-	●	●	-	-
Super Quick 15	●	●	●	●	●
Wash and Dry 60 mins	●	●	●	●	●
HygieneCare	●	-	-	●	●
Down	-	●	●	-	-
Refresh	-	●	●	-	-
Drum Clean	●	●	●	-	-
Sportswear	-	●	●	●	●
Allergy+	●	●	●	●	●
Mixed Load	●	●	●	●	●
Night wash /dry	-	●	●	-	-
My Time	-	●	●	-	-
Reduced Ironing	●	●	●	-	-
Aqua Plus/Rinse Plus	●/-	●	●	-/●	-/●
Pre wash	●	●	●	●	●
Variable Temperature/Spin	●	●	●	●	●
PERFORMANCE / TECHNICAL INFORMATION					
Energy efficiency class	A	A	A	A	A
Capacity cotton (Kg) washing	7.0	10.0	10.0	7.0	7.0
Capacity cotton (Kg) drying	4.0	6.0	6.0	4.0	4.0
Maximum spin speed (rpm)	1400	1400	1400	1500	1500
Washing performance class	A	A	A	A	A
Energy consumption (wash and dry of full wash load) (kWh)	4.76	6.82	6.82	4.76	4.76
Energy consumption (wash only) (kWh)	0.70	1.22	1.22	0.73	0.73
Water consumption (wash and dry full wash load) (l)	57	125	125	103	103
Noise level washing (dB(A) re 1 pW) washing/spinning /drying	46/74/61	47/71/60	47/71/60	47/74/59	47/74/59
Dimensions of the product (cm)	84.5 x 60.0 x 59.0	84.8 x 60.0 x 65.4	84.8 x 60.0 x 65.4	85.0 x 60.0 x 59.0	85.0 x 60.0 x 59.0

● = Yes - = No

For full specification details, please log onto our website and download a full specification sheet.

Making **life easy** through innovative technologies

Tumble dryers

Serie 8 +++

WTYH6791GB

Home Connect: home appliances with smart connectivity for an easier everyday life.



TYPE	DRYER
DESIGN FAMILY	SERIE 8
MODEL	WTYH6791GB
KEY FEATURES	
Home Connect	•
AutoDry	•
Heat pump	•
Self cleaning condenser	•
EasyClean filter	-
ADDITIONAL FEATURES	
Sensitive Drying system	•
Anti crease cycle (mins)	120
Time delay/Time Remaining	•/•
Drum interior light	•
Water container full/blocked filter warning indicator	•/•
Child lock	•
PROGRAMMES/FUNCTIONS	
Cottons	•
Easy-care	•
Woolen Finish	•
Superquick 40	•
Timed programmes	•
Mixed Load	•
Sportswear	•
Shirts 15	-
Towels	•
Delicates	•
Down Wear	•
Shirts and blouses	•
Blankets	•
Allergy+	•
Wool /Trainer basket	•
Memory /My Favourite	•
Buzzer	•
Low Heat option	•
Crease Guard	•
PERFORMANCE / TECHNICAL INFORMATION	
Energy efficiency class	A++
Capacity cotton (kg)	9.0
Energy consumption annual (kWh/annum)	259.0
Condensation efficiency class	A
Condensation efficiency for standard cotton programme on full and partial load	91%
Ambient temperature range	5 - 35 C
Noise level (dB(A) re 1pW)	64
Dimensions of the product (cm)	84.2 x 59.9 x 59.9
Door hinge	Right-hand

• = Yes - = No
Data valid in this table as of January 2019. Subject to modification without prior notice.



TYPE	DRYER	DRYER	DRYER	DRYER	DRYER
DESIGN FAMILY	SERIE 8	SERIE 8	SERIE 6	SERIE 6	SERIE 6
MODEL	WTWH7561GB	WTW87561GB	WTWH7660GB	WTW85493GB	WTG86402GB
KEY FEATURES					
Home Connect	•	-	•	-	-
AutoDry	•	•	•	•	•
Heat pump	•	•	•	•	-
Self cleaning condenser	•	•	•	•	-
EasyClean filter	-	-	-	-	-
ADDITIONAL FEATURES					
Sensitive Drying system	•	•	•	•	•
Anti crease cycle (mins)	120	120	120	60	120
Time delay/Time Remaining	•/•	•/•	•/•	•/•	•/•
Drum interior light	•	•	•	•	•
Water container full/blocked filter warning indicator	•/•	•/•	•/•	•/•	•/•
Child lock	•	•	•	•	•
PROGRAMMES/FUNCTIONS					
Cottons	•	•	•	•	•
Easy-care	•	•	•	•	•
Woolen Finish	•	•	•	•	•
Superquick 40	•	•	•	•	•
Timed programmes	•	•	•	•	•
Mixed Load	•	•	•	•	•
Sportswear	•	•	•	•	•
Shirts 15	-	-	-	-	•
Towels	•	•	•	•	-
Delicates	•	•	•	-	-
Down Wear	•	•	•	•	•
Shirts and blouses	•	•	•	•	-
Blankets	-	-	-	-	-
Allergy+	•	•	•	-	•
Wool /Trainer basket	-	-	-	-	-
Memory /My Favourite	-	-	/•	-	-
Buzzer	•	•	•	•	•
Low Heat option	•	•	•	•	•
Crease Guard	•	•	•	•	•
PERFORMANCE / TECHNICAL INFORMATION					
Energy efficiency class	A++	A++	A+++	A++	B
Capacity cotton (kg)	9.0	9.0	9.0	8.0	8.0
Energy consumption annual (kWh/annum)	259.0	259.0	243.0	236.0	561.0
Condensation efficiency class	A	A	A	B	B
Condensation efficiency for standard cotton programme on full and partial load	91%	91%	91%	84%	88%
Ambient temperature range	5 - 35 C	5 - 35 C	5 - 35 C	5 - 35 C	5 - 35 C
Noise level (dB(A) re 1pW)	64	64	64	64	65
Dimensions of the product (cm)	84.2 x 59.9 x 59.9	84.2 x 59.9 x 59.9	84.2 x 59.9 x 59.9	84.2 x 59.8 x 59.9	84.2 x 59.8 x 59.9
Door hinge	Right-hand	Right-hand	Right-hand	Right-hand	Right-hand

• = Yes - = No
The programme cotton cupboard dry used at full and partial loads is the standard drying programme to which the information on the energy label refers. This is the most efficient programme in terms of energy consumption for cotton. Annual consumption is based on 160 drying cycles. Data valid in this table as of January 2019. Subject to modification without prior notice.

For full specification details, please log onto our website and download a full specification sheet.

Tumble dryers



TYPE	DRYER		DRYER	
DESIGN FAMILY	SERIE 4		SERIE 4	
MODEL	WTW85231GB		WTR85V21GB	
WTN85200GB				
WTA79200GB				
KEY FEATURES				
Home Connect	-	-	-	-
AutoDry	●	●	●	●
Heat pump	●	●	-	-
Self cleaning condenser	●	-	-	-
EasyClean filter		●	-	-
ADDITIONAL FUNCTIONS				
Sensitive Drying system	●	●	●	●
Anti crease cycle (mins)	60	60	120	120
Time delay/Time Remaining	●/●	●/●	●/●	●/●
Drum interior light	●	-	-	-
Water container full/blocked filter warning indicator	●/●	●/●	●/●	-/●
Child lock		●	●	-
PROGRAMMES/FUNCTIONS				
Cottons	●	●	●	●
Easy-care	●	●	●	●
Woollen Finish	●	●	●	●
Superquick 40	●	●	●	●
Timed programmes	●	●	●	●
Mixed Load	●	●	●	●
Sportswear	●	●	●	●
Shirts 15	-	-	●	-
Towels	●	●	-	●
Delicates	●	●	-	●
Down Wear	●	-	●	-
Shirts and blouses	●	●	-	●
Blankets	-	-	-	-
Allergy+	-	-	●	-
Wool /Trainer basket	-	-	-	-
Memory /My Favourite	-	-	-	-
Buzzer	●	●	●	●
Low Heat option	●	●	●	●
Crease Guard	●	●	●	●
PERFORMANCE / TECHNICAL INFORMATION				
Energy efficiency class	A++	A++	B	C
Capacity cotton (kg)	8.0	8.0	7.0	7.0
Energy consumption annual (kWh/annum)	224.0	235.0	499.0	504.0
Condensation efficiency class	B	B	B	-
Condensation efficiency for standard cotton programme on full and partial load	83%	83%	88%	-
Ambient temperature range	5 - 35 C	5 - 35 C	5 - 35 C	5 - 35 C
Noise level (dB(A) re 1pW)	64	65	65	65
Dimensions of the product (cm)	84.2 x 59.8 x 59.9	84.2 x 59.8 x 59.9	84.2 x 59.8 x 59.9	84.2 x 59.7 x 60.10
Door hinge	Right-hand	Right-hand	Right-hand	Right-hand

• = Yes - = No
The programme cotton cupboard dry used at full and partial loads is the standard drying programme to which the information on the energy label refers. This is the most efficient programme in terms of energy consumption for cotton.
Annual consumption is based on 160 drying cycles. Data valid in this table as of January 2019. Subject to modification without prior notice.

For full specification details, please log onto our website and download a full specification sheet.

Explore more at www.bosch-home.co.uk



Introducing the Bosch dishwasher range.

All our free-standing dishwashers offer a range of advanced technologies as standard and additional options across the range to suit your individual requirements.

To help you choose the right Bosch dishwasher, we have divided them into the four ranges below.

Serie 8 +++

Our **Serie 8** range combines cutting-edge design and advanced technologies including our Home Connect feature, for optimum cleaning performance. The **A+++** energy efficiency rating of this range is complemented by our **PerfectDry** function, where moisture is absorbed before being released as hot air for energy-efficient drying. The **VarioFlex Pro** basket system offers additional storage and flexible loading solutions.

Serie 4 +

Our **Serie 4** models offer great value for money but do not compromise on Bosch build quality. They combine advanced energy- and resource-saving features and in addition offer **VarioFlex** baskets with foldable racks in the lower basket.

Serie 6 ++

Our **Serie 6** range comes packed with technology, from energy- and water-saving modes to quick washes for when time is of a premium. This range contains a **PerfectDry** model offering excellent drying results and also our quietest model that can operate as low as 36dB.

Serie 2

Our **Serie 2** dishwasher range offers you classic design with easy operation. This is the optimal solution for anyone who wants a reliable appliance to suit their individual requirements.



PerfectDry

A clever function that saves energy by using less electricity to dry everything to perfection. And we do mean everything - plates, pans, glasses and all plastic items. Your lunch boxes and containers will be completely clean and perfectly dry, so you'll never have to pick up a tea towel to finish the job again.

The technology behind PerfectDry, unique to Bosch, is called Zeolith®. It is a process applied to every cycle that uses naturally occurring minerals, that heat up when they come into contact with water. The warm air is then distributed evenly over the load.



The dish dryer among dishwashers.

The technology behind **PerfectDry** uses **Zeolith®** minerals to help dry the load economically and efficiently. The dishwasher absorbs humidity from the washed dishes and the clever **Zeolith®** beads then transform that humidity into warm air that speeds up the drying process. So when you need a wash with brilliant drying results, it's time to choose Bosch.



+++ ExtraDry

Want your dishes extra dry? No problem. This function gives you even more drying power when you need it. Just choose the Extra Dry option and more heat will be created to extend your load's drying cycle.

Choose the right appliance for you, for the space in your kitchen.



60cm



45cm



Compact

Different types of control.

Serie 8



TFT Display with top edge touch control

Serie 6



LED Display with Touch Control

Serie 4



LED Display with button control

Serie 2



LED Display with dial control




Model shown: SMS88TW06G

Machine care.
Your dishwasher will help look after itself with this smart function. Optimising the water and energy consumption, it works on a short run time of 80-90 minutes at high temperatures. It eliminates lime and grease deposits inside the dishwasher and works with a standard machine-care detergent. On selected Serie 8 and Serie 6 models, it will even remind you to run the programme every 30 cycles.


10 year anti-rust warranty.
Our appliances are made from top quality materials and in addition to our standard appliance warranty, we provide a free of charge warranty against rusting-through of the dishwasher's inner cavity.

Dishwasher functions explained.


(Check model for available functions)




ExtraDry
Want your dishes extra dry? No problem. This function gives you even more drying power when you need it. Just choose the Extra Dry option and more heat will be created to extend your load's drying cycle.




VarioSpeed Plus
Our VarioSpeed Plus option reduces programme times without compromising on quality. So you still get hygienically clean and dry dishes but in about a third of the time of the Eco programme – ideal for busy households and entertaining.



Home Connect
To stay at their best, different dishes and glassware need to be washed in different ways. With the Bosch Home Connect app, simply tell your dishwasher what's in the load and it'll work out the perfect program.




Place Settings
A selection of our dishwashers will hold up to 14 place settings in one load – perfect for larger households.




Self-cleaning filters
Self cleaning filter system, with spray arms designed to direct water at the filters on every rotation.

Please note, self cleaning filters are designed to keep filters clear during the washing cycle. Regular filter cleaning and maintenance is still recommended.



Dosage Assist
Get the most out of your detergent with Dosage Assist; a small area at the front of the top basket that catches the tablet when it's released during the cycle. It controls how the tablet is dissolved for optimum performance.



DuoPower
Our 45cm models feature a twin spray arm in the top basket to ensure perfect water coverage every time.

Bosch dishwasher programmes.

PROGRAMME NAME	ITEMS SUITABLE FOR PROGRAMME	TYPE OF SOILING	ADDITIONAL OPERATIONAL OPTIONS
Economy 50	Mixed utensils & cutlery	Part dried, common household food remnants	All
Intensive 70	Pots, pans, non-sensitive utensils & cutlery	Very stubborn burned or dried-on food remains containing starch or protein	All
Auto 45-65	Mixed utensils & cutlery	Part dried, common household food remnants	All
Glass 40	Sensitive utensils, cutlery, temperature-sensitive plastic & glass	Lightly adhering, fresh food remains	IntensiveZone, VarioSpeedPlus, Half load, ExtraDry, Shine and Dry
Silence 50	Mixed utensils & cutlery	Part dried, common household food remnants.	IntensiveZone, Half load, HygienePlus, ExtraDry, Shine and Dry
Pre rinse*	All types of dishes.	Cold rinsing, intermediate cleaning.	None
Quick 45°C*	Sensitive utensils, cutlery, temperature-sensitive plastic & glass	Lightly adhering, fresh food remains	Extra Dry, Shine & Dry
1 Hour 65°C	Mixed utensils & cutlery	Part dried, common household food remnants.	Extra Dry, Shine & Dry
Short 60°C	Mixed utensils & cutlery	Part dried, common household food remnants	All
Normal 65°C	Pots, pans, non-sensitive utensils & cutlery	Very stubborn burned or dried-on food remains containing starch or protein	Extra Dry, Hygiene Plus, Intensive Zone, VarioSpeed Plus
Machine Care	Run when empty	Thoroughly cleans your machine - use in combination with a standard machine care detergent	None

*Programme does not include drying in the cycle.

Bosch innovation in all our free-standing dishwashers.

Whisper quiet washing.

Bosch dishwashers are amongst the quietest in the world. With the revolutionary **EcoSilence Drive™** there are dishwashers in the range which operate at 38 decibels, that's even quieter than the sound of a bee buzzing! With the Silence programme selected, the noise is reduced even further.

Energy efficiency.

The opportunity to save energy is now even greater. Innovative technology in our dishwashers gets the most out of every single drop of water. Our most energy-efficient dishwashers in the **Serie 8** and **Serie 6** ranges boast an A+++ energy rating.

Save water every load.

The **ActiveWater™** technology in our dishwashers means it can take as little as 6.7 litres* of water to clean 13 place settings for a three-course meal**. That's less water than it takes to fill a standard sized kitchen sink.

*6.7 litre water consumption on standard Economy 50° programme on dishwasher model SMS46JW09G.

**Three-course meal as defined by dinner, soup and dessert plate, cup and saucer, glass, knife, fork, soup, tea and dessert spoons for each place setting as well as 1 serving plate, 2 serving bowls, 2 serving spoons, 1 serving fork and 1 sauce spoon.



Model shown: SMS67MW00G

Explore more at www.bosch-home.co.uk

60cm dishwashers

Serie 8



SMS88TW06G



Use your voice to start your dishwasher or even find out how long before your dishes are ready.



Tablet top-up

Amazon Dash Replenishment will automatically reorder your dishwasher tablets when your supply is running low. Simply activate Dash Replenishment in the **Home Connect** app and regain time spent shopping for supplies, as tablets will be automatically delivered to your doorstep. Another thing crossed off your to-do list.

Set up of Amazon dash Replenishment service is required



Home Connect is a service offered by Home Connect GmbH. For more information on Home Connect please visit www.bosch-home.co.uk

DISHWASHER TYPE	60CM DISHWASHER
DESIGN FAMILY	SERIE 8
MODEL	SMS88TW06G
Colour	White
DESIGN FEATURES	
Drying system	PerfectDry Zeolith
Home Connect WiFi connectivity	•
Control panel type	Top edge touch control + TFT
Basket description	VarioFlex Pro
VarioDrawer 3rd loading level	VarioDrawer Pro
Adjustable upper basket	3-stage Rackmatic™
Cup shelves upper/lower baskets	2/2
Cutlery shelves upper basket	-
Largest loadable dish upper/lower basket (cm)	21/31
Load Sensor	•
Aqua Sensor	•
Start delay time max hours	24
Time remaining indicator	•
Emotion light (interior lighting)	•
End of cycle indicator	Acoustic
Salt/Rinse aid light indicator	•/•
Flood protection system	AquaStop 24h
Safety features	Door lock
PROGRAMMES / FUNCTIONS	
List of programmes	Intensive 70 °C, Auto 45-65 °C, Eco 50 °C, Silence 50 °C, Short 60 °C, Glass 40 °C, Quick 45 °C, Pre rinse, Machine Care
Additional special options	Remote Start, Intensive Zone, VarioSpeed Plus, Hygiene Plus, Extra Dry
Duration of Quick Wash programme	35
TECHNICAL INFORMATION	
Reference programme for measurements	Economy 50
Energy efficiency class	A+++ -10%
Total annual energy (kWh)/ Water (litres) consumption¹	211/ 2100
Energy (kWh)/ Water (litres) consumption²	0.73/ 7.5
Number of place settings	13
Cleaning/ Drying performance class	A/A
Noise level (dB(A) re 1 pW)	42 (40 in Silence programme)
Total cycle time of reference programme (min)	225
Maximum height adjustability feet (cm)	2
Depth with open door 90 degree (cm)	115.5
Length of electrical supply cord (cm)	175
Length inlet/ outlet hose (cm)	165/ 190
Height of the product with removable top (cm)	84.5
Height of the product without removable top (cm)	81.5
Width/ Depth of the product (cm)	60/ 60
Net weight/ Gross weight (kg)	56/ 59
Water softener³	•
Maximum accepted water hardness (DH)	50°DH
Maximum temperature for water intake (°C)	60
Included accessories	Large item spray head, Wine Glass holder
Optional accessories (see below)	SGZ1010, SMZ5100, SMZ5300

• = Yes - = No

Key to accessories: SGZ1010: inlet / outlet hose extension (2m), SMZ5300: Wine glass holder, SMZ5002: Silver polishing cassette, SMZ5100: Adjustable cutlery basket, SPZ5100: Vario cutlery basket, SZ73100: Cutlery basket
¹ Based on 280 standard cleaning cycles using cold water fill, including consumption of the standby mode
² The consumption per cleaning cycle of the "Eco 50°" programme using cold water fill
³ We would recommend our dishwashers are connected to the mains water supply where possible. However, they may also be connected to an external water softener as long as the water softener produces softened water of less than 1.1 mmol/litre (7.0°e) and the water softener in the appliance is turned off. Please contact product advice for further information.
Water pressure required: 0.5-10 Bar. Flow rate: 10 litres per minute. Inlet valve connected directly to ¾" screwed joint.
All models comply with COMMISSION REGULATION (EC) No 1275/2008 with regard to ecodesign requirements for standby and off mode electric power consumption.
Data valid in this table as of April 2019. Subject to modification without prior notice.

60cm dishwashers



DISHWASHER TYPE					
60CM DISHWASHERS					
DESIGN FAMILY	SERIE 6	SERIE 6	SERIE 4	SERIE 4	SERIE 4
MODEL	SMS67MW00G	SMS67MW01G	SMS46JW09G	SMS46MW03G	SMS46IH01G
Colour	White	White	White	White	Silver inox
DESIGN FEATURES					
Drying system	PerfectDry Zeolith	Heat exchanger/Eco Dry	Heat exchanger	Heat exchanger	Heat exchanger
Home Connect WiFi connectivity	-	-	-	-	-
Control panel type	Front touch control + LED	Front touch control + LED	Front button control + LED	Front button control + LED	Front button control + LED
Basket description	VarioFlex	VarioFlex	VarioFlex	VarioFlex	VarioFlex
VarioDrawer 3rd loading level	VarioDrawer	VarioDrawer	-	VarioDrawer	-
Adjustable upper basket	3-stage Rackmatic™	3-stage Rackmatic™	3-stage Rackmatic™	3-stage Rackmatic™	3-stage Rackmatic™
Cup shelves upper/ lower baskets	2/2	2/2	2/-	2/2	2/-
Cutlery shelves upper basket	-	-	●	-	●
Largest loadable dish upper/ lower basket (cm)	21/31	21/31	27/31	21/31	27/31
Load Sensor	●	●	●	●	●
Aqua Sensor	●	●	●	●	●
Start delay time max hours	24	24	24	24	24
Time remaining indicator	●	●	●	●	●
Emotion light (interior lighting)	-	-	-	-	-
End of cycle indicator	-	-	-	-	-
Salt/ Rinse aid light indicator	●/●	●/●	●/●	●/●	●/●
Flood protection system	AquaStop 24h	AquaStop 24h	Internal	Internal	Internal
Safety features	Control panel lock	Control panel lock	Control panel lock, door lock	Control panel lock, door lock	Control panel lock,door lock
PROGRAMMES / FUNCTIONS					
List of programmes	Intensive 70 °C, Auto 45-65 °C, Eco 50 °C, Short 60 °C, Glass 40 °C, Quick 45 °C, Pre rinse, Machine Care	Intensive 70 °C, Auto 45-65 °C, Eco 50 °C, Silence 50 °C, Glass 40 °C, 1 Hour 65 °C, Quick 45 °C, Machine Care	Intensive 70 °C, Auto 45-65 °C, Eco 50 °C, Glass 40 °C, Quick 45 °C, Pre rinse, Machine Care	Intensive 70 °C, Auto 45-65 °C, Eco 50 °C, Glass 40 °C, Quick 45 °C, Pre-Rinse, Machine Care	Intensive 70 °C, Auto 45-65 °C, Eco 50 °C, Glass 40 °C, Quick 45 °C, Pre rinse, Machine Care
Additional special options	Intensive Zone, VarioSpeed Plus, Hygiene Plus, Extra Dry	Intensive Zone, VarioSpeed Plus, Hygiene Plus, Extra Dry	VarioSpeed Plus, Hygiene Plus, Extra Dry	VarioSpeed Plus, Hygiene Plus, Extra Dry	VarioSpeed Plus, Hygiene Plus, Extra Dry
Duration of Quick Wash programme	29	29	35	29	29
TECHNICAL INFORMATION					
Reference programme for measurements	Economy 50	Economy 50	Economy 50	Economy 50	Economy 50
Energy efficiency class	A+++	A+	A++	A++	A++
Total annual energy (kWh)/ Water (litres) consumption¹	237/ 2660	299/ 2660	262/ 1876	262/ 2660	262/ 2660
Energy (kWh)/ Water (litres) consumption²	0.83/ 9.5	1.05/ 9.5	0.94/ 6.7	0.93/ 9.5	0.92/ 9.5
Number of place settings	14	14	13	14	13
Cleaning/ Drying performance class	A/A	A/A	A/A	A/A	A/A
Noise level (dB(A) re 1 pW)	44	38 (36 in Silence programme)	46	46	46
Total cycle time of reference programme (min)	195	195	245	225	225
Maximum height adjustability feet (cm)	2	2	2	2	2
Depth with open door 90 degree (cm)	115.5	115.5	115.5	115.5	115.5
Length of electrical supply cord (cm)	175	175	175	175	175
Length inlet/ outlet hose (cm)	165/ 190	165/ 190	150/ 190	150/ 190	150/ 190
Height of the product with removable top (cm)	84.5	84.5	84.5	84.5	84.5
Height of the product without removable top (cm)	81.5	81.5	81.5	81.5	81.5
Width/ Depth of the product (cm)	60/ 60	60/ 60	60/ 60	60/ 60	60/ 60
Net weight/ Gross weight (kg)	53/ 56	60/ 63	49/ 52	49/ 51	46/ 48
Water softener³	●	●	●	●	●
Maximum accepted water hardness (DH)	50°DH	50°DH	50°DH	50°DH	50°DH
Maximum temperature for water intake (°C)	60	60	60	60	60
Included accessories	Large item spray head	Large item spray head	Large item spray head	Large item spray head	Large item spray head
Optional accessories (see below)	SGZ1010, SMZ5100, SMZ5300	SGZ1010, SMZ5100, SMZ5300	SGZ1010, SMZ5002, SMZ5300	SGZ1010, SMZ5002, SMZ5300	SGZ1010, SMZ5002, SMZ5300

● = Yes - = No

Key to accessories: SGZ1010: inlet / outlet hose extension (2m), SMZ5300: Wine glass holder, SMZ5002: Silver polishing cassette, SMZ5100: Adjustable cutlery basket, SPZ5100: Vario cutlery basket, SZ73100: Cutlery basket
¹ Based on 280 standard cleaning cycles using cold water fill, including consumption of the standby mode
² The consumption per cleaning cycle of the "Eco 50" programme using cold water fill
³ We would recommend our dishwashers are connected to the mains water supply where possible. However, they may also be connected to an external water softener as long as the water softener produces softened water of less than 1.1 mmol/litre (7.0°e) and the water softener in the appliance is turned off. Please contact product advice for further information.
Water pressure required: 0.5-10 Bar. Flow rate: 10 litres per minute. Inlet valve connected directly to ¾" screwed joint. All models comply with COMMISSION REGULATION (EC) No 1275/2008 with regard to ecodesign requirements for standby and off mode electric power consumption. Data valid in this table as of April 2019. Subject to modification without prior notice.



DISHWASHER TYPE					
60CM DISHWASHERS					
DESIGN FAMILY	SERIE 4	SERIE 2	SERIE 2	SERIE 2	SERIE 2
MODEL	SMS46IW10G	SMS25EW00G	SMS25AI00G	SMS25AB00G	SMS25AW00G
Colour	White	White	Silver inox	Black	White
DESIGN FEATURES					
Drying system	Heat exchanger	Heat exchanger	Heat exchanger	Heat exchanger	Heat exchanger
Home Connect WiFi connectivity	-	-	-	-	-
Control panel type	Front button control + LED	Front dial control + LED	Front dial control + LED	Front dial control + LED	Front dial control + LED
Basket description	VarioFlex	Vario	Vario	Vario	Vario
VarioDrawer 3rd loading level	-	VarioDrawer	-	-	-
Adjustable upper basket	3-stage Rackmatic™	3-stage Rackmatic™	Adjustable when empty	Adjustable when empty	Adjustable when empty
Cup shelves upper/ lower baskets	2/-	2/-	2/-	2/-	2/-
Cutlery shelves upper basket	●	-	●	●	●
Largest loadable dish upper/ lower basket (cm)	27/31	21/31	27/31	27/31	27/31
Load Sensor	●	●	●	●	●
Aqua Sensor	●	-	-	-	-
Start delay time max hours	24	24	24	24	24
Time remaining indicator	●	●	●	●	●
Emotion light (interior lighting)	-	-	-	-	-
End of cycle indicator	-	-	-	-	-
Salt/ Rinse aid light indicator	●/●	●/●	●/●	●/●	●/●
Flood protection system	Internal	Internal	Internal	Internal	Internal
Safety features	Control panel lock, door lock	Door lock	Door lock	Door lock	Door lock
PROGRAMMES / FUNCTIONS					
List of programmes	Intensive 70 °C, Auto 45-65 °C, Eco 50 °C, Glass 40 °C, Quick 45 °C, Pre-Rinse, Machine Care	Intensive 70 °C, Eco 50 °C, Glass 40 °C, Quick 45 °C, Pre-Rinse	Intensive 70 °C, Eco 50 °C, Glass 40 °C, Quick 45 °C, Pre-Rinse	Intensive 70 °C, Eco 50 °C, Glass 40 °C, Quick 45 °C, Pre-Rinse	Intensive 70 °C, Eco 50 °C, Glass 40 °C, Quick 45 °C, Pre-Rinse
Additional special options	VarioSpeed Plus, Hygiene Plus, Extra Dry	VarioSpeed Plus, Extra Dry	VarioSpeed Plus, Extra Dry	VarioSpeed Plus, Extra Dry	VarioSpeed Plus, Extra Dry
Duration of Quick Wash programme	29	29	29	29	29
TECHNICAL INFORMATION					
Reference programme for measurements	Economy 50	Economy 50	Economy 50	Economy 50	Economy 50
Energy efficiency class	A++	A++	A++	A++	A++
Total annual energy (kWh)/ Water (litres) consumption¹	262/ 2660	262/ 2660	258/ 2660	258/ 2660	258/ 2660
Energy (kWh)/ Water (litres) consumption²	0.92/ 9.5	0.92/ 9.5	0.9/ 9.5	0.9/ 9.5	0.9/ 9.5
Number of place settings	13	13	12	12	12
Cleaning/ Drying performance class	A/A	A/A	A/A	A/A	A/A
Noise level (dB(A) re 1 pW)	46	48	48	48	48
Total cycle time of reference programme (min)	225	210	210	210	210
Maximum height adjustability feet (cm)	2	2	2	2	2
Depth with open door 90 degree (cm)	115.5	115.5	115.5	115.5	115.5
Length of electrical supply cord (cm)	175	175	175	175	175
Length inlet/ outlet hose (cm)	150/ 190	150/ 190	150/ 190	150/ 190	150/ 190
Height of the product with removable top (cm)	84.5	84.5	84.5	84.5	84.5
Height of the product without removable top (cm)	81.5	81.5	81.5	81.5	81.5
Width/ Depth of the product (cm)	60/ 60	60/ 60	60/ 60	60/ 60	60/60
Net weight/ Gross weight (kg)	49/ 51	45/ 46	45/ 47	49/ 50	49/50
Water softener³	●	●	●	●	●
Maximum accepted water hardness (DH)	50°DH	50°DH	50°DH	50°DH	50°DH
Maximum temperature for water intake (°C)	60	60	60	60	60
Included accessories	Large item spray head	Large item spray head	Large item spray head	Large item spray head	Large item spray head
Optional accessories (see below)	SGZ1010, SMZ5002, SMZ5300	SGZ1010, SMZ5300	SGZ1010, SMZ5002, SMZ5300	SGZ1010, SMZ5002, SMZ5300	SGZ1010, SMZ5002, SMZ5300

● = Yes - = No

Key to accessories: SGZ1010: inlet / outlet hose extension (2m), SMZ5300: Wine glass holder, SMZ5002: Silver polishing cassette, SMZ5100: Adjustable cutlery basket, SPZ5100: Vario cutlery basket, SZ73100: Cutlery basket
¹ Based on 280 standard cleaning cycles using cold water fill, including consumption of the standby mode
² The consumption per cleaning cycle of the "Eco 50" programme using cold water fill
³ We would recommend our dishwashers are connected to the mains water supply where possible. However, they may also be connected to an external water softener as long as the water softener produces softened water of less than 1.1 mmol/litre (7.0°e) and the water softener in the appliance is turned off. Please contact product advice for further information.
Water pressure required: 0.5-10 Bar. Flow rate: 10 litres per minute. Inlet valve connected directly to ¾" screwed joint. All models comply with COMMISSION REGULATION (EC) No 1275/2008 with regard to ecodesign requirements for standby and off mode electric power consumption. Data valid in this table as of April 2019. Subject to modification without prior notice.

Slimline dishwashers



DISHWASHER TYPE		45CM DISHWASHERS		COMPACT DISHWASHER
DESIGN FAMILY		SERIE 6	SERIE 4	SERIE 4
MODEL		SPS66TW00G	SPS46II00G	SPS46IW00G
Colour		White	Silver inox	White
DESIGN FEATURES				
Drying system		Heat exchanger/ Eco Dry	Heat exchanger	Heat exchanger
Home Connect WiFi connectivity		-	-	-
Control panel type		Front button control + LED	Front button control + LED	Front button control + LED
Basket description		VarioFlex Plus	VarioFlex	VarioFlex
VarioDrawer 3rd loading level		VarioDrawer Pro	-	-
Adjustable upper basket		3-stage Rackmatic™	3-stage Rackmatic™	3-stage Rackmatic™
Cup shelves upper/ lower baskets		1/1	2/-	2/-
Cutlery shelves upper basket		-	•	•
Largest loadable dish upper/ lower basket (cm)		21/31	27/31	27/31
Load Sensor		•	•	•
Aqua Sensor		•	•	•
Start delay time max hours		24	24	24
Time remaining indicator		•	•	•
Emotion light (interior lighting)		-	-	-
End of cycle indicator		-	-	-
Salt/ Rinse aid light indicator		•/•	•/•	•/•
Flood protection system		AquaStop 24hr	Internal	Internal
Safety features		Control panel lock	Control panel lock, door lock	Control panel lock, door lock
PROGRAMMES / FUNCTIONS				
List of programmes		Intensive 70 °C, Auto 45-65 °C, Eco 50 °C, Silence 50 °C, Glass 40 °C, Quick 45 °C, Machine Care	Intensive 70 °C, Auto 45-65 °C, Eco 50 °C, Silence 50 °C, Glass 40 °C, Quick 45 °C, Machine Care	Intensive 70 °C, Auto 45-65 °C, Eco 50 °C, Silence 50 °C, Glass 40 °C, Quick 45 °C, Machine Care
Additional special options		Intensive Zone, VarioSpeed Plus, Extra Dry	Intensive Zone, VarioSpeed Plus, Extra Dry	Intensive Zone, VarioSpeed, Extra Dry
Duration of Quick Wash programme		29	29	29
TECHNICAL INFORMATION				
Reference programme for measurements		Economy 50	Economy 50	Economy 50
Energy efficiency class		A++	A+	A+
Total annual energy (kWh)/ Water (litres) consumption¹		211/2660	220/2660	220/2660
Energy (kWh)/ Water (litres) consumption²		0.75/9.5	0.78/9.5	0.78/9.5
Number of place settings		10	9	9
Cleaning/ Drying performance class		A/A	A/A	A/A
Noise level (dB(A) re 1 pW)		44 (41 in Silence programme)	46 (43 in Silence programme)	46 (43 in Silence programme)
Total cycle time of reference programme (min)		195	195	195
Maximum height adjustability feet (cm)		2	2	2
Depth with open door 90 degree (cm)		115.5	115.5	115.5
Length of electrical supply cord (cm)		175	175	175
Length inlet/ outlet hose (cm)		165/205	165/205	165/205
Height of the product with removable top (cm)		84.5	84.5	84.5
Height of the product without removable top (cm)		81.5	81.5	81.5
Width/ Depth of the product (cm)		45/60	45/60	45/60
Net weight/ Gross weight (kg)		44/45	41/42	41/42
Water softener³		•	•	•
Maximum accepted water hardness (DH)		50°DH	50°DH	50°DH
Maximum temperature for water intake (°C)		60	60	60
Included accessories		Large item spray head	Large item spray head	Large item spray head
Optional accessories (see below)		SGZ1010, SMZ5001, SMZ5300, SPZ5100	SGZ1010, SMZ5001, SMZ5300	SGZ1010, SMZ5001, SMZ5300

• = Yes - = No

Key to accessories: SGZ1010: Inlet / outlet hose extension (2m), SMZ5300: Wine glass holder, SMZ5002: Silver polishing cassette, SMZ5100: Adjustable cutlery basket, SPZ5100: Vario cutlery basket, SZ73100: Cutlery basket

¹ Based on 280 standard cleaning cycles using cold water fill, including consumption of the standby mode

² The consumption per cleaning cycle of the "Eco 50" programme using cold water fill

³ We would recommend our dishwashers are connected to the mains water supply where possible. However, they may also be connected to an external water softener as long as the water softener produces softened water of less than 1.1 mmol/litre (7.0°e) and the water softener in the appliance is turned off. Please contact product advice for further information.

Water pressure required: 0.5-10 Bar. Flow rate: 10 litres per minute. Inlet valve connected directly to ¾" screwed joint. All models comply with COMMISSION REGULATION (EC) No 1275/2008 with regard to ecodesign requirements for standby and off mode electric power consumption. Data valid in this table as of April 2019. Subject to modification without prior notice.

Introducing the Bosch refrigeration range.



Save more, waste less. Our range of freestanding fridge freezers save you money thanks to their energy efficiency ratings. They are also packed with innovative technology to keep your food fresher for longer, so you'll throw out less and save on your weekly shopping bill.

To help you choose the right appliance, we have divided them into the four ranges below.

Serie 8+++

Cutting-edge design meets advanced technologies. All models in our **Serie 8** range are packed with energy efficient and labour saving features that save valuable time, effort and money – perfect for modern, busy households.

Serie 6++

Our **Serie 6** range of appliances combines energy efficient performance with convenient storage and superior food preservation.

Serie 4+

All models in our **Serie 4** range combine practical features with Bosch build quality.

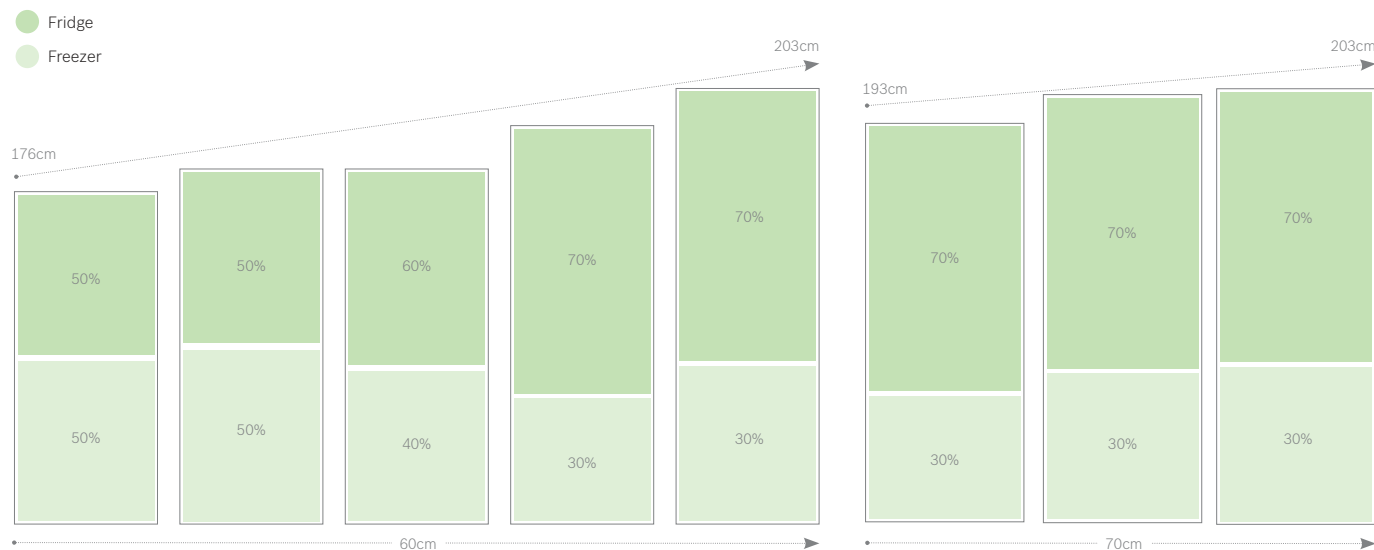
Serie 2

Built to keep electricity costs down. With energy efficiency an increasing priority in homes, the **Serie 2** refrigeration range is just as efficient as it is value for money.

Selecting the right fridge freezer for you.

Height, width and fridge freezer split.

Our fridge freezer options are tailored to suit every family household need so you can choose your appliance to ensure this. For those who shop little and often, try a smaller capacity fridge and freezer which doesn't impact on space. If you have a busy household and do a full weekly shop, a spacious 70/30 fridge freezer would be ideal.



Explanation of refrigeration icons.

(Check model for available functions)



Home Connect

Thanks to Home Connect, you can now check the contents of your fridge at any given time and place. Interior door cameras take pictures every time the door is closed, and conveniently send them to your mobile device.



NoFrost

Never defrost again, thanks to perfect protection from ice formation - that saves time and effort.



LowFrost

Defrost less often thanks to lower ice formation — saves work and is energy-efficient.



BigBox

An extra-deep frozen food drawer for practical stacking of frozen foods containers or large frozen items like gateaux or pizzas.



MultiBox

Transparent drawer with wave bottom, ideal for the storage of fruits and vegetables.



Safety Glass

Strong glass shelves ensure heavier items can be stored safely.



SuperCool

Activating the SuperCooling function before you go shopping lowers the temperature for a short period, so your fresh shopping is kept at the right temperature.



MultiAirflow

The fan-assisted MultiAirflow System causes gentle, even currents of cold air to emerge at all levels of the chilling and freezing area. Temperature fluctuations are minimised and cooling times reduced.



EasyShelf Access

The shatterproof, frameless glass shelves are particularly easy to use, thanks to the smooth pull-out mechanism. And they also give you a clear view of your food at any time.



Finger Print Free

Your appliance will stay finger print free and looking clean and fresh.

Features that make Bosch the right choice.

NoFrost.

Never worry about having to defrost the freezer again. The NoFrost system prevents the build up of ice by automatically initiating the defrost operation as required. This also helps to maintain the appliance's energy efficiency.



LowFrost.

LowFrost cuts ice build up by half meaning you have to defrost your freezer less often, compared to approximately every 3 months for a static freezer, saving you energy and time.

SuperFreeze & SuperCool.

Activating the SuperFreeze function before you go shopping lowers the temperature for a short period, so anything new put into the freezer is frozen quickly. SuperCool on your fridge performs a similar task, keeping everything at the right storage temperature.

PerfectFit.

Our cooling appliances with PerfectFit can be positioned right next to side walls and furniture in your kitchen. This allows the most flexible installation possible so you have the appliance where you want it.

Model shown: **KGN34XL35G**

Making **life easy** through innovative technologies

Lock in the freshness.

VitaFresh

With **VitaFresh**, you'll be able to store your fruit and vegetables at exactly 0°C to lock in the freshness. Also, with an adjustable humidity setting on the drawer, you'll be keeping your fresh food in a perfectly controlled environment.

This combination of temperature and humidity helps you to protect all the aromas, essential nutrients and valuable vitamins in your fresh food. Hence, it is easier than ever to maintain a healthy diet with fresh fruit and vegetables every day.

You'll also find two drawers, one for fish and one for meat, with a temperature regulating slider which lets you lower the temperature up to 4°C lower than the rest of the fridge. **VitaFresh plus** models have the added benefit of a convenient push button for humidity control.



Controlling your appliance.

Across the range of cooling appliances, there are different ways you can control the temperature inside your fridge and freezer. Below are the different variations:



Exterior LED, digital control (touch control).



Exterior LCD, digital control (touch control).



Exterior touch control (digital control).



Interior LED button control.



Interior LED button (freezer only).

Whichever model you choose, you'll find lots of reasons to love your Bosch fridge freezer.

Energy efficient.

365 days a year, 24 hours a day, fridges and freezers are always on. In fact, they make up around 17% of the electricity used in the home, or even more if it's a particularly old model.* That's why we design our fridges and freezers to be as energy efficient as possible, and we're proud to be able to offer so many right across our ranges.

VarioZone.

With more flexibility due to variable-use glass shelves and drawers in the freezer compartment, you have more space to store larger items for those occasion you need to.

*Source: www.greenchoices.org/green-living/at-home/fridges-freezers



Easy to Clean Magnetic Door Seals

The magnetic door seals on all of our refrigeration ranges are **removable**, making them easy to clean and/or replace when necessary.



Model shown: **KG36AW35G**

Making **life easy** through innovative technologies

Designed to be redesigned.

The innovative Vario Style system is equipped with a clever combination of invisible hooks and magnets so you can easily change the colour of your door.

You don't need any specific tools or technical knowledge. Within just 3 easy steps your kitchen style is transformed.

With our Vario Style fridge freezers and VitaFresh freshness system, both your food and your kitchen will always be fresh and in season.

door set colour options

Check specification tables on the following pages for height options and product codes.

Colour	Product Code	Dimensions (HxWxD) cm	EAN number
Espresso Brown	KSZ1AVD00	186 x 60 x 60	4242002975788
	KSZ1BVD00	203 x 60 x 60	4242002978291
Coffee Brown	KSZ1AVD10	186 x 60 x 60	4242002975795
	KSZ1BVD10	203 x 60 x 60	4242002978307
Raspberry	KSZ1AVE00	186 x 60 x 60	4242005066018
	KSZ1BVE00	203 x 60 x 60	4242005066025
Sunflower	KSZ1AVF00	186 x 60 x 60	4242002976433
	KSZ1BVF00	203 x 60 x 60	4242002978345
Stone Grey	KSZ1AVG00	186 x 60 x 60	4242005066216
	KSZ1BVG00	203 x 60 x 60	4242005066223
Lime Green	KSZ1AVH00	186 x 60 x 60	4242002975757
	KSZ1BVH00	203 x 60 x 60	4242002978260
Mint Green	KSZ1AVJ00	186 x 60 x 60	4242005059591
	KSZ1BVJ00	203 x 60 x 60	4242005059607
Pearl Green	KSZ1AVJ00	186 x 60 x 60	4242005059591
	KSZ1BVJ00	203 x 60 x 60	4242005059607
Champagne	KSZ1AVK00	186 x 60 x 60	4242002976419
	KSZ1BVK00	203 x 60 x 60	4242002978321
Plum	KSZ1AVL00	186 x 60 x 60	4242005059577
	KSZ1BVL00	203 x 60 x 60	4242005059584
Pearl Night Blue	KSZ1AVN00	186 x 60 x 60	4242005059614
	KSZ1BVN00	203 x 60 x 60	4242005059621
Orange	KSZ1AVO00	186 x 60 x 60	4242002975740
	KSZ1BVO00	203 x 60 x 60	4242002978253
Light Rose	KSZ1AVP00	186 x 60 x 60	4242005066032
	KSZ1BVP00	203 x 60 x 60	4242005066049
Cherry Red	KSZ1AVR00	186 x 60 x 60	4242002975733
	KSZ1BVR00	203 x 60 x 60	4242002978215
Light Blue	KSZ1AVT00	186 x 60 x 60	4242005066179
	KSZ1BVT00	203 x 60 x 60	4242005066186
Aqua	KSZ1AVU00	186 x 60 x 60	4242002975764
	KSZ1BVU00	203 x 60 x 60	4242002978277
Petrol	KSZ1AVU10	186 x 60 x 60	4242002975771
	KSZ1BVU10	203 x 60 x 60	4242002978284
Pearl White	KSZ1AVV00	186 x 60 x 60	4242005066056
	KSZ1BVV00	203 x 60 x 60	4242005066063
Pearl Gold	KSZ1AVX00	186 x 60 x 60	4242005066193
	KSZ1BVX00	203 x 60 x 60	4242005066209
Pearl Bronze	KSZ1AVD20	186 x 60 x 60	4242002961156
	KSZ1BVD20	203 x 60 x 60	4242005109777
Pearl Anthracite	KSZ1AVG10	186 x 60 x 60	4242005109791
	KSZ1BVG10	203 x 60 x 60	4242005109807
Pearl Grey	KSZ1AVG20	186 x 60 x 60	4242005109838
	KSZ1BVG20	203 x 60 x 60	4242005109845
Pearl Aubergine	KSZ1AVL10	186 x 60 x 60	4242005109852
	KSZ1BVL10	203 x 60 x 60	4242005109869
Black	KSZ1AVZ00	186 x 60 x 60	4242002975801
	KSZ1BVZ00	203 x 60 x 60	4242002978314

Explore more at www.bosch-home.co.uk

Fridge freezers

Serie 6



KGN36HI32

Thanks to Home Connect, you can now check the contents of your fridge at any given time and place. Interior door cameras take pictures every time the door is closed, and conveniently send them to your mobile device. Wherever you are, simply access your Home Connect app to get a perfect overview of what's in your fridge. Never forget an item again.



home
connect



Home Connect is a service offered by Home Connect GmbH.

For more information on Home Connect please visit www.bosch-home.co.uk

TYPE	FRIDGE FREEZERS
DESIGN FAMILY	SERIE 6
MODEL	KGN36HI32
Colour	Stainless steel easy clean
DESIGN FEATURES	
Fridge / Freezer split	60 / 40
Frost-free system	NoFrost
Colour of side panels	Chrome inox metallic
Door handle type	Vertical Bar
Temperature display	Exterior / Digital LED
Reversible door, hinged on right	-
Latest Condenser Technology	-
Home connect / Built in cameras	● / ●

FOOD FRESHNESS SYSTEM	
Food preservation container	1 x VitaFresh Plus 0°C drawer, 1 x VitaFresh Plus vegetable drawer

KEY FEATURES – FRIDGE SECTION	
LED light	●
SuperCool function	●
Bottle rack	●
Number of glass safety shelves	4
Number of adjustable shelves	2
Number of door bins large / small	1 / 2
Dairy compartment	-
Number of egg racks	1

KEY FEATURES – FREEZER SECTION	
Number of freezer drawers including BigBox / EasyAccess	3
SuperFreeze function	●
Number of ice packs / ice cube trays	- / 1

FUNCTIONS	
Door open warning signal/malfunction	●
Holiday / Sabbath mode	- / -

ADDITIONAL INFORMATION	
Energy efficiency class	A++
Annual energy consumption* (kWh)	258
Total unit net capacity (litres)	320
Refrigerator net capacity including 0°C drawers (litres)	234
Refrigerator 0°C net capacity (litres)	23
Freezer net capacity (litres)	86
Climate Class ²	SN-T
Noise level dB (A) re 1 pW	42
Dimensions of the product (cm) H x W x D	187 x 60 x 65

● = yes - = no
¹ Actual energy consumption will depend on how the appliance is used and where it is located
² Climate zone SN = designed to operate in ambient temperature of +10°C to 32°C
Climate zone T = designed to operate in ambient temperature of +18°C to 43°C

Fridge freezers



TYPE	FRIDGE FREEZER	FRIDGE FREEZER	FRIDGE FREEZER	FRIDGE FREEZER	FRIDGE FREEZER
DESIGN FAMILY	SERIE 6	SERIE 6	SERIE 6	SERIE 4	SERIE 4
MODEL	KGN49AI31	KGN36AI35G	KGN36AW35G	KGN56XL30	KGN49XL30G
Colour	Stainless steel easy clean	Stainless steel easy clean	White	Stainless steel look	Stainless steel look
DESIGN FEATURES					
Fridge / Freezer split	70 / 30	60 / 40	60 / 40	70 / 30	70 / 30
Frost-free system	NoFrost	NoFrost	NoFrost	NoFrost	NoFrost
Colour of side panels	Chrome inox metallic	Chrome inox metallic	White	Chrome inox metallic	Chrome inox metallic
Door handle type	Vertical Bar	Vertical Bar	Vertical Bar	Integrated Vertical	Integrated Vertical
Temperature display	Exterior / Digital LCD	Exterior / Digital LCD	Exterior / Digital LCD	Exterior / Digital LED	Exterior / Digital LED
Reversible door, hinged on right	●	●	●	●	●
Latest Condenser Technology	●	●	●	●	●
Home connect / Built in cameras	●/-	●/-	●/-	-/-	-/-
FOOD FRESHNESS SYSTEM					
Food preservation container	2 x VitaFresh Plus 0°C drawers, 1 x VitaFresh Plus vegetable drawer	2 x VitaFresh Plus 0°C drawers, 1 x VitaFresh Plus vegetable drawer	2 x VitaFresh Plus 0°C drawers, 1 x VitaFresh Plus vegetable drawer	2 x VitaFresh 0°C drawers, 1 x VitaFresh vegetable drawer	2 x VitaFresh 0°C drawers, 1 x VitaFresh vegetable drawer
KEY FEATURES – FRIDGE SECTION					
LED light	●	●	●	●	●
SuperCool function	●	●	●	●	●
Bottle rack	●	●	●	●	●
Number of glass safety shelves	5	4	4	4	5
Number of adjustable shelves	4	2	2	3	4
Number of door bins large / small	1/2	1/1	1/1	1/3	1/3
Dairy compartment	●	●	●	-	-
Number of egg racks	3	3	3	3	3
KEY FEATURES – FREEZER SECTION					
Number of freezer drawers including BigBox / EasyAccess	3	3	3	2	3
SuperFreeze function	●	●	●	●	●
Number of ice packs / ice cube trays	2/1	2/1	2/1	2/1	-/1
FUNCTIONS					
Door open warning signal/malfunction	●	●	●	●	●
Holiday / Sabbath mode	●/●	●/●	●/●	-/-	-/-
ADDITIONAL INFORMATION					
Energy efficiency class	A++	A++	A++	A++	A++
Annual energy consumption ¹ (kWh)	303	260	260	325	303
Total unit net capacity (litres)	435	324	324	505	435
Refrigerator net capacity including 0°C drawers (litres)	330	237	237	400	330
Refrigerator 0°C net capacity (litres)	25	21	21	38	28
Freezer net capacity (litres)	105	87	87	105	105
Climate Class ²	SN-T	SN-T	SN-T	SN-T	SN-T
Noise level dB (A) re 1 pW	40	39	39	42	40
Dimensions of the product (cm) H x W x D	203 x 70 x 67	186 x 60 x 66	186 x 60 x 66	193 x 70 x 80	203 x 70 x 67

● = yes - = no
¹ Actual energy consumption will depend on how the appliance is used and where it is located
² Climate zone SN = designed to operate in ambient temperature of +10°C to 32°C
Climate zone T = designed to operate in ambient temperature of +18°C to 43°C

For full specification details, please log onto our website and download a full specification sheet.

Explore more at www.bosch-home.co.uk



FRIDGE FREEZER	FRIDGE FREEZER	FRIDGE FREEZER	FRIDGE FREEZER	FRIDGE FREEZER	FRIDGE FREEZER	FRIDGE FREEZER
SERIE 4	SERIE 4	SERIE 4	SERIE 4	SERIE 4	SERIE 4	SERIE 4
KGN49XW30	KGN36XW35G	KGN39XL35G	KGN39XW36G	KGN39IJ3AG	KGN39VL3AG	KGN39VW35G
White	White	Stainless steel look	White	VarioStyle interchangeable doors	Stainless steel look	White
70 / 30	60 / 40	70 / 30	70 / 30	70 / 30	70 / 30	70 / 30
NoFrost	NoFrost	NoFrost	NoFrost	NoFrost	NoFrost	NoFrost
White	White	Chrome inox metallic	White	Chrome inox metallic	Chrome inox metallic	White
Integrated Vertical	Vertical Bar	Vertical Bar	Integrated Vertical	Integrated Vertical	Integrated Vertical	Integrated Vertical
Exterior / Digital LED	Exterior / Digital LED	Exterior / Digital LED	Exterior / Digital LED	Interior / Electronic LED	Interior / Electronic LED	Interior / Electronic LED
●	●	●	●	●	●	●
●	●	●	●	●	●	●
-/-	-/-	-/-	-/-	-/-	-/-	-/-
2 x VitaFresh 0°C drawers, 1 x VitaFresh vegetable drawer	2 x VitaFresh 0°C drawers, 1 x VitaFresh vegetable drawer	2 x VitaFresh 0°C drawers, 1 x VitaFresh vegetable drawer	2 x VitaFresh 0°C drawers, 1 x VitaFresh vegetable drawer	2 x VitaFresh 0°C drawers, 1 x VitaFresh vegetable drawer	2 x VitaFresh 0°C drawers, 1 x VitaFresh vegetable drawer	2 x VitaFresh 0°C drawers, 1 x VitaFresh vegetable drawer
●	●	●	●	●	●	●
●	●	●	●	●	●	●
●	-	●	●	●	●	-
5	4	5	5	5	5	5
4	2	3	3	3	3	3
1/3	1/2	1/3	1/3	1/3	1/3	1/3
-	-	-	-	-	-	-
3	3	3	3	3	3	3
3	3	3	3	3	3	3
●	●	●	●	●	●	●
-/1	-/1	-/1	-/1	-/1	-/1	-/1
●	●	●	●	●	●	●
-/-	-/-	-/-	-/-	-/-	-/-	-/-
A++	A++	A++	A++	A++	A++	A++
303	260	273	273	273	273	273
435	324	366	366	366	366	366
330	237	279	279	279	279	279
28	24	24	24	24	24	24
105	87	87	87	87	87	87
SN-T	SN-T	SN-T	SN-T	SN-T	SN-T	SN-T
40	39	39	39	39	39	39
203 x 70 x 67	186 x 60 x 66	203 x 60 x 66	203 x 60 x 66	203 x 60 x 66	203 x 60 x 66	203 x 60 x 66

● = yes - = no
¹ Actual energy consumption will depend on how the appliance is used and where it is located
² Climate zone SN = designed to operate in ambient temperature of +10°C to 32°C
Climate zone T = designed to operate in ambient temperature of +18°C to 43°C

For full specification details, please log onto our website and download a full specification sheet.

Making **life easy** through innovative technologies

Fridge freezers

vario style



TYPE	FRIDGE FREEZER	FRIDGE FREEZER	FRIDGE FREEZER	FRIDGE FREEZER
DESIGN FAMILY	SERIE 4	SERIE 4	SERIE 4	SERIE 4
MODEL	KG N36 IJ3AG	KG N36 VL35G	KG N34 XL35G	KG N34 XW35G
Colour	VarioStyle interchangeable doors	Stainless steel look	Stainless steel look	White
DESIGN FEATURES				
Fridge / Freezer split	60 / 40	60 / 40	50 / 50	50 / 50
Frost-free system	NoFrost	NoFrost	NoFrost	NoFrost
Colour of side panels	Chrome inox metallic	Chrome inox metallic	Chrome inox metallic	White
Door handle type	Integrated Vertical	Integrated Vertical	Vertical Bar	Vertical Bar
Temperature display	Interior / Electronic LED	Interior / Electronic LED	Exterior / Digital LED	Exterior / Digital LED
Reversible door, hinged on right	●	●	●	●
Latest Condenser Technology	●	●	●	●
Home connect / Built in cameras	- / -	- / -	- / -	- / -
FOOD FRESHNESS SYSTEM				
Food preservation container	2 x VitaFresh 0°C drawers, 1 x VitaFresh vegetable drawer	2 x VitaFresh 0°C drawers, 1 x VitaFresh vegetable drawer	2 x VitaFresh 0°C drawers, 1 x VitaFresh vegetable drawer	2 x VitaFresh 0°C drawers, 1 x VitaFresh vegetable drawer
KEY FEATURES – FRIDGE SECTION				
LED light	●	●	●	●
SuperCool function	●	●	●	●
Bottle rack	●	-	-	-
Number of glass safety shelves	4	4	4	4
Number of adjustable shelves	2	2	2	2
Number of door bins large / small	1 / 2	1 / 2	1 / 2	1 / 2
Dairy compartment	-	-	-	-
Number of egg racks	3	3	3	3
KEY FEATURES – FREEZER SECTION				
Number of freezer drawers including BigBox / EasyAccess	3	3	3	3
SuperFreeze function	●	●	●	●
Number of ice packs / ice cube trays	- / 1	- / 1	- / 1	- / 1
FUNCTIONS				
Door open warning signal/malfunction	●	●	●	●
Holiday / Sabbath mode	- / -	- / -	- / -	- / -
ADDITIONAL INFORMATION				
Energy efficiency class	A++	A++	A++	A++
Annual energy consumption ¹ (kWh)	260	260	267	267
Total unit net capacity (litres)	324	324	319	319
Refrigerator net capacity including 0°C drawers (litres)	237	237	214	214
Refrigerator 0°C net capacity (litres)	24	24	24	24
Freezer net capacity (litres)	87	87	105	105
Climate Class ²	SN-T	SN-T	SN-T	SN-T
Noise level dB (A) re 1 pW	39	39	39	39
Dimensions of the product (cm) H x W x D	186 x 60 x 66	186 x 60 x 66	186 x 60 x 66	186 x 60 x 66

● = yes - = no
¹ Actual energy consumption will depend on how the appliance is used and where it is located
² Climate zone SN = designed to operate in ambient temperature of +10°C to 32°C
Climate zone T = designed to operate in ambient temperature of +18°C to 43°C

For full specification details, please log onto our website and download a full specification sheet.

Explore more at www.bosch-home.co.uk



FRIDGE FREEZER	FRIDGE FREEZER	FRIDGE FREEZER	FRIDGE FREEZER	FRIDGE FREEZER	FRIDGE FREEZER
SERIE 4	SERIE 2	SERIE 2	SERIE 2	SERIE 2	SERIE 2
KG N34 VB35G	KG N34 NL3AG	KG N34 NW3AG	KG N36 NW30G	KG N33 NL3AG	KG N33 NW3AG
Black	Stainless steel look	White	White	Stainless steel look	White
50 / 50	50 / 50	50 / 50	60 / 40	50 / 50	50 / 50
NoFrost	NoFrost	NoFrost	NoFrost	NoFrost	NoFrost
Chrome inox metallic	Chrome inox metallic	White	White	Chrome inox metallic	White
Integrated Vertical	Integrated Horizontal	Integrated Horizontal	Integrated Horizontal	Integrated Horizontal	Integrated Horizontal
Interior / Electronic LED	Interior / Electronic LED	Interior / Electronic LED	Interior / Electronic LED	Interior / Electronic LED	Interior / Electronic LED
●	●	●	●	●	●
●	●	●	●	●	●
- / -	- / -	- / -	- / -	- / -	- / -
2 x VitaFresh 0°C drawers, 1 x VitaFresh vegetable drawer	1 x MultiBox vegetable drawer	1 x MultiBox vegetable drawer	1 x MultiBox vegetable drawer	1 x MultiBox vegetable drawer	1 x MultiBox vegetable drawer
●	●	●	●	●	●
●	-	-	-	-	-
-	-	-	-	-	-
4	4	4	4	3	3
2	2	2	3	2	2
1 / 2	1 / 2	1 / 2	1 / 3	1 / 2	1 / 2
-	-	-	-	-	-
3	3	3	3	3	3
3	3	3	3	3	3
●	●	●	●	●	●
- / 1	- / 1	- / 1	- / -	- / -	- / -
●	●	●	●	●	●
- / -	- / -	- / -	- / -	- / -	- / -
A++	A++	A++	A++	A++	A++
267	242	242	235	228	228
319	297	297	302	279	279
214	192	192	215	192	192
24	-	-	-	-	-
105	105	105	87	87	87
SN-T	SN-T	SN-T	SN-T	SN-T	SN-T
39	42	42	42	42	42
186 x 60 x 66	186 x 60 x 66	186 x 60 x 66	186 x 60 x 66	176 x 60 x 66	176 x 60 x 66

● = yes - = no
¹ Actual energy consumption will depend on how the appliance is used and where it is located
² Climate zone SN = designed to operate in ambient temperature of +10°C to 32°C
Climate zone T = designed to operate in ambient temperature of +18°C to 43°C

For full specification details, please log onto our website and download a full specification sheet.

Making **life easy** through innovative technologies

Fridge freezers



TYPE	FRIDGE FREEZER	FRIDGE FREEZER	FRIDGE FREEZER	FRIDGE FREEZER
DESIGN FAMILY	SERIE 4	SERIE 4	SERIE 4	SERIE 4
MODEL	KGE49VI4AG	KGE49VW4AG	KGE36VW4A	KGV39VL31G
Colour	Stainless steel easy clean	White	White	Stainless steel look
DESIGN FEATURES				
Fridge / Freezer split	70 / 30	70 / 30	60 / 40	70 / 30
Frost-free system	LowFrost	LowFrost	LowFrost	LowFrost
Colour of side panels	Chrome inox metallic	White	White	Chrome inox metallic
Door handle type	Integrated Vertical	Integrated Vertical	Integrated Vertical	Integrated Vertical
Temperature display	Interior / Digital LED	Interior / Digital LED	Interior / Digital LED	Interior / Electronic LED
Reversible door, hinged on right	●	●	●	●
Latest Condenser Technology	-	-	-	-
Home connect / Built in cameras	-/-	-/-	-/-	-/-
FOOD FRESHNESS SYSTEM				
Food preservation container	1 x VitaFresh 0°C drawer, 1 x VitaFresh vegetable drawer	1 x VitaFresh 0°C drawer, 1 x VitaFresh vegetable drawer	1 x VitaFresh 0°C drawer, 1 x VitaFresh vegetable drawer	1 x VitaFresh vegetable drawer
KEY FEATURES – FRIDGE SECTION				
LED light	●	●	●	●
SuperCool function	●	●	●	-
Bottle rack	●	●	●	●
Number of glass safety shelves	5	5	4	5
Number of adjustable shelves	2	2	2	2
Number of door bins large / small	1 / 3	1 / 3	1 / 2	1 / 3
Dairy compartment	-	-	-	-
Number of egg racks	3	3	3	3
KEY FEATURES – FREEZER SECTION				
Number of freezer drawers including BigBox / EasyAccess	3	3	3	3
SuperFreeze function	●	●	●	●
Number of ice packs / ice cube trays	2 / -	2 / -	2 / -	- / -
FUNCTIONS				
Door open warning signal/malfunction	●	●	●	-
Holiday / Sabbath mode	●/-	●/-	●/-	- / -
ADDITIONAL INFORMATION				
Energy efficiency class	A+++	A+++	A+++	A++
Annual energy consumption ¹ (kWh)	190	190	161	237
Total unit net capacity (litres)	413	413	302	342
Refrigerator net capacity including 0°C drawers (litres)	302	302	214	248
Refrigerator 0°C net capacity (litres)	28	28	22	-
Freezer net capacity (litres)	111	111	88	94
Climate Class ²	SN-T	SN-T	SN-T	SN-T
Noise level dB (A) re 1 pW	38	38	38	39
Dimensions of the product (cm) H x W x D	201 x 70 x 65	201 x 70 x 65	186 x 60 x 65	201 x 60 x 65

● = yes - = no
¹ Actual energy consumption will depend on how the appliance is used and where it is located
² Climate zone SN = designed to operate in ambient temperature of +10°C to 32°C
Climate zone T = designed to operate in ambient temperature of +18°C to 43°C

For full specification details, please log onto our website and download a full specification sheet.

Explore more at www.bosch-home.co.uk



FRIDGE FREEZER	FRIDGE FREEZER	FRIDGE FREEZER	FRIDGE FREEZER	FRIDGE FREEZER
SERIE 4	SERIE 4	SERIE 4	SERIE 4	SERIE 4
KGV39VW32G	KGV36VL32G	KGV36VW32G	KGV33VL31G	KGV33XW30G
White	Stainless steel look	White	Stainless steel look	White
70 / 30	60 / 40	60 / 40	50 / 50	50 / 50
LowFrost	LowFrost	LowFrost	LowFrost	LowFrost
White	Chrome inox metallic	White	Chrome inox metallic	White
Integrated Vertical	Integrated Vertical	Integrated Vertical	Integrated Vertical	Integrated Vertical
Interior / Electronic LED	Interior / Electronic LED	Interior / Electronic LED	Interior / Electronic LED	Interior / Electronic LED
●	●	●	●	●
-	-	-	-	-
- / -	- / -	- / -	- / -	- / -
1 x VitaFresh vegetable drawer	1 x VitaFresh vegetable drawer	1 x VitaFresh vegetable drawer	1 x VitaFresh vegetable drawer	1 x VitaFresh vegetable drawer
●	●	●	●	●
-	-	-	-	-
●	●	●	●	●
5	4	4	4	4
2	2	2	2	2
1 / 3	1 / 2	1 / 2	1 / 2	1 / 1
-	-	-	-	●
3	3	3	3	3
3	3	3	3	3
●	●	●	●	●
- / -	- / -	- / -	- / -	- / -
-	-	-	-	-
- / -	- / -	- / -	- / -	- / -
A++	A++	A++	A++	A++
237	226	226	219	219
342	307	307	287	287
248	213	213	193	193
-	-	-	-	-
94	94	94	94	94
SN-T	SN-T	SN-T	SN-T	SN-T
39	39	39	39	39
201 x 60 x 65	186 x 60 x 65	186 x 60 x 65	176 x 60 x 65	176 x 60 x 65

● = yes - = no
¹ Actual energy consumption will depend on how the appliance is used and where it is located
² Climate zone SN = designed to operate in ambient temperature of +10°C to 32°C
Climate zone T = designed to operate in ambient temperature of +18°C to 43°C

For full specification details, please log onto our website and download a full specification sheet.

Making **life easy** through innovative technologies

Selecting the right fridge or freezer for you

Joining strips

If you choose to have a freestanding single door fridge and single door freezer installed into your kitchen you may want to consider using joining strips to go between the two appliances. This allows a more seamless finish to your kitchen as the gap between the appliances will be covered. We have two available options, from stainless steel or white, simply select the joining strip which suits your appliance colour.



White joining strip 203cm
KSZ39AW00

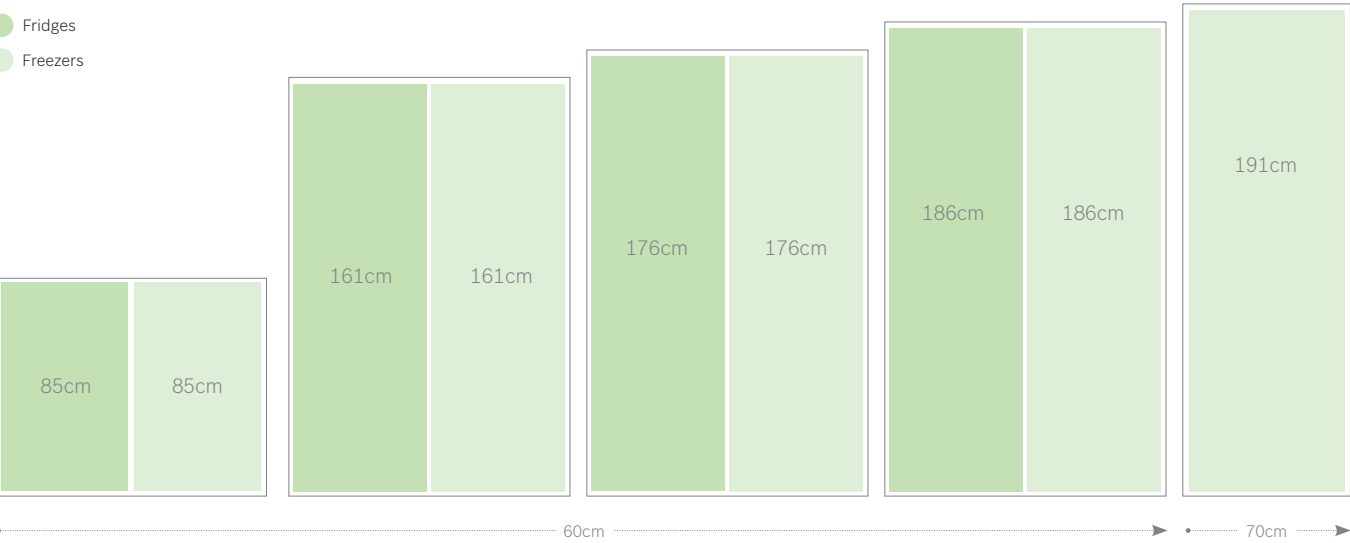


Stainless joining strip 203cm
KSZ39AL00

Side by side

Single door fridges and freezers are designed to sit side by side to give you the double door effect. With hinges that can be fitted to either side of the appliances, you can choose which side you would like your fridge and freezer. Of course, if you want your appliances separate this is possible as well. Choose from a variety of heights to suit your kitchen.

- Fridges
- Freezers



Fridges



TYPE	FRIDGE	FRIDGE	FRIDGE	FRIDGE	FRIDGE
DESIGN FAMILY	SERIE 6	SERIE 6	SERIE 4	SERIE 4	SERIE 4
MODEL	KSV36AW4PG	KSV36AW3PG	KSV36VB3PG	KSV36VL3PG	KSV36VW3PG
Colour	White	White	Black	Stainless steel look	White
DESIGN FEATURES					
Colour of side panels	White	White	Black	Chrome inox metallic	White
Door handle type	Vertical Bar	Vertical Bar	Vertical Bar	Vertical Bar	Vertical Bar
Temperature display	Interior / Digital LED	Interior / Digital LED	Interior / Electronic LED	Interior / Electronic LED	Interior / Electronic LED
Reversible door, hinged on left	●	●	●	●	●
Latest Condenser Technology	●	●	●	●	●
Home connect / Built in cameras	- / -	- / -	- / -	- / -	- / -
FOOD FRESHNESS SYSTEM					
Food preservation container	1 x VitaFresh Plus, 1 x MultiBox vegetable drawer	1 x VitaFresh Plus, 1 x MultiBox vegetable drawer	1 x VitaFresh vegetable drawer	1 x VitaFresh vegetable drawer	1 x VitaFresh vegetable drawer
KEY FEATURES – FRIDGE SECTION					
LED light	●	●	●	●	●
SuperCool function	●	●	●	●	●
Bottle rack	●	●	●	●	●
Number of glass safety shelves	7	7	7	7	7
Number of adjustable shelves	4	4	5	5	5
Number of door bins large / small	2 / 2	2 / 2	2 / 2	2 / 2	2 / 2
flex Shelf	-	-	-	-	-
Dairy compartment	●	●	●	●	●
Number of egg racks	3	3	3	3	3
FUNCTIONS					
Door open warning signal/malfunction	●	●	-	-	-
Holiday / Sabbath mode	- / -	- / -	- / -	- / -	- / -
PERFORMANCE AND CONSUMPTION					
Energy efficiency class	A+++	A++	A++	A++	A++
Annual energy consumption ¹ (kWh)	75	112	112	112	112
Refrigerator net capacity including 0°C drawers (litres)	346	346	346	346	346
Refrigerator 0°C net capacity (litres)	-	-	-	-	-
Climate Class ²	SN-T	SN-T	SN-T	SN-T	SN-T
Noise level dB (A) re 1 pW	39	39	39	39	39
Dimensions of the product (cm) H x W x D	186 x 60 x 65	186 x 60 x 65	186 x 60 x 65	186 x 60 x 65	186 x 60 x 65
Matching Freezer	GSN36AW3PG	GSN36AW3PG	GSN36VB3PG	GSN36VL3PG	GSN36VW3VG

● = yes - = no
¹ Actual energy consumption will depend on how the appliance is used and where it is located
² Climate zone SN = designed to operate in ambient temperature of +10°C to 32°C
Climate zone T = designed to operate in ambient temperature of +18°C to 43°C

Fridges & freezers



TYPE	FRIDGE		FRIDGE	
DESIGN FAMILY	SERIE 4		SERIE 2	
MODEL	KSV33VL3PG	KSV33VW3PG	KSV36NW3PG	KSV29NW3PG
Colour	Stainless steel look	White	White	White
DESIGN FEATURES				
Colour of side panels	Chrome inox metallic	White	White	White
Door handle type	Vertical Bar	Vertical Bar	Vertical Bar	Vertical Bar
Temperature display	Interior / Electronic LED	Interior / Electronic LED	Interior / Electronic LED	Interior / Electronic LED
Reversible door, hinged on left	●	●	●	●
Latest Condenser Technology	●	●	●	●
Home connect / Built in cameras	- / -	- / -	- / -	- / -
FOOD FRESHNESS SYSTEM				
Food preservation container	1 x VitaFresh vegetable drawer	1 x VitaFresh vegetable drawer	1 x MultiBox vegetable drawer	1 x MultiBox vegetable drawer
KEY FEATURES – FRIDGE SECTION				
LED light	●	●	●	●
SuperCool function	●	●	●	●
Bottle rack	●	●	-	-
Number of glass safety shelves	7	7	6	5
Number of adjustable shelves	5	5	5	4
Number of door bins large / small	2 / 2	2 / 2	2 / 3	1 / 3
flex Shelf	-	-	-	-
Dairy compartment	●	●	-	-
Number of egg racks	3	3	3	3
FUNCTIONS				
Door open warning signal/malfunction	-	-	-	-
Holiday / Sabbath mode	- / -	- / -	- / -	- / -
PERFORMANCE AND CONSUMPTION				
Energy efficiency class	A++	A++	A++	A++
Annual energy consumption¹ (kWh)	110	110	112	107
Refrigerator net capacity including 0°C drawers (litres)	324	324	346	290
Refrigerator 0°C net capacity (litres)	-	-	-	-
Climate Class²	SN-T	SN-T	SN-T	SN-T
Noise level dB (A) re 1 pW	39	39	39	39
Dimensions of the product (cm) H x W x D	176 x 60 x 65	176 x 60 x 65	186 x 60 x 65	161 x 60 x 65
Matching Freezer	GSN33VL3P	GSN33VW3PG	-	GSN29VW3VG

● = yes - = no
¹ Actual energy consumption will depend on how the appliance is used and where it is located
² Climate zone SN = designed to operate in ambient temperature of +10°C to 32°C
Climate zone T = designed to operate in ambient temperature of +18°C to 43°C



TYPE	FREEZER	
DESIGN FAMILY	SERIE 6	
MODEL NUMBER	GSN58AW35	
Colour	White	
DESIGN FEATURES		
Frost-free system	NoFrost	
Colour of side panels	White	
Door handle type	Vertical Bar	
Temperature display	Interior / Digital LED	
Reversible door, hinged on right	●	
Latest Condenser Technology	●	
Home connect / Built in cameras	- / -	
FOOD FRESHNESS SYSTEM		
MultiAirflow system	●	
KEY FEATURES – FREEZER SECTION		
LED light	●	
Number of freezer compartments	8	
Number of freezer drawers including bigBox	5	
Number of freezer flaps / easyAccess shelves	3 / -	
Number of glass safety shelves	7	
SuperFreeze function	●	
Twist Ice Box	-	
Number of ice packs / ice cube trays	3 / 1	
FUNCTIONS		
Door open warning signal/malfunction	●	
Holiday / Sabbath mode	- / -	
PERFORMANCE AND CONSUMPTION		
Energy efficiency class	A++	
Annual energy consumption¹ (kWh)	301	
Freezer net capacity (litres)	360	
Climate Class²	SN-T	
Storage period in event of power failure (hours)	25	
Noise level dB (A) re 1 pW	42	
Dimensions of the product (cm) H x W x D	191 x 70 x 78	
Matching Fridge	-	



FREEZER	FREEZER	FREEZER	FREEZER	FREEZER	FREEZER	FREEZER
SERIE 6	SERIE 4	SERIE 4	SERIE 4	SERIE 4	SERIE 4	SERIE 4
GSN36AW3PG	GSN36VB3PG	GSN36VL3PG	GSN36VW3VG	GSN33VL3P	GSN33VW3PG	GSN29VW3VG
White	Black	Stainless steel look	White	Stainless steel look	White	White
DESIGN FEATURES						
NoFrost	NoFrost	NoFrost	NoFrost	NoFrost	NoFrost	NoFrost
White	Black	Chrome inox metallic	White	Chrome inox metallic	White	White
Vertical Bar	Vertical Bar	Vertical Bar	Vertical Bar	Vertical Bar	Vertical Bar	Vertical Bar
Interior / Digital LED	Interior / Electronic LED	Interior / Electronic LED	Interior / Electronic LED	Interior / Electronic LED	Interior / Electronic LED	Interior / Electronic LED
●	●	●	●	●	●	●
●	●	●	●	●	●	●
- / -	- / -	- / -	- / -	- / -	- / -	- / -
FOOD FRESHNESS SYSTEM						
●	●	●	●	●	●	●
KEY FEATURES – FREEZER SECTION						
●	●	●	●	●	●	●
7	7	7	7	7	7	6
4	4	4	5	4	4	5
- / 3	- / 3	- / 3	2 / -	- / 3	- / 3	1 / -
6	6	6	6	6	6	5
●	●	●	●	●	●	●
●	-	-	-	-	-	-
2 / -	2 / 1	2 / 1	2 / 1	2 / 1	2 / 1	2 / 1
FUNCTIONS						
●	●	●	●	●	●	●
- / -	- / -	- / -	- / -	- / -	- / -	- / -
PERFORMANCE AND CONSUMPTION						
A++	A++	A++	A++	A++	A++	A++
237	237	237	237	228	228	214
242	242	242	242	225	225	200
SN-T	SN-T	SN-T	SN-T	SN-T	SN-T	SN-T
25	25	25	25	25	25	25
42	42	42	42	42	42	42
186 x 60 x 65	186 x 60 x 65	186 x 60 x 65	186 x 60 x 65	176 x 60 x 65	176 x 60 x 65	161 x 60 x 65
KSV36AW4PG / KSV36AW3PG	KSV36VB3PG	KSV36VL3PG	KSV36VW3PG	KSV33VL3PG	KSV33VW3PG	KSV29NW3PG

Undercounters & wine cooler



TYPE	UNDERCOUNTER FRIDGE	UNDERCOUNTER FRIDGE FREEZER	UNDERCOUNTER FREEZER
DESIGN FAMILY	SERIE 2	SERIE 2	SERIE 2
MODEL	KTR15NW3AG	KTL15NW3AG	GTV15NW3AG
Colour	White	White	White
DESIGN FEATURES			
Colour of side panels	White	White	White
Door handle type	Integrated Horizontal	Integrated Horizontal	Integrated Horizontal
Temperature display	-	-	-
Reversible door, hinged on right	●	●	●
Latest Condenser Technology	-	-	-
Home connect / Built in cameras	- / -	- / -	- / -
FOOD FRESHNESS SYSTEM			
Food preservation container	1 x MultiBox vegetable drawer	1 x MultiBox vegetable drawer	-
KEY FEATURES – FRIDGE SECTION			
LED light	●	●	-
SuperCool function	-	-	-
Bottle rack	-	-	-
Number of glass safety shelves	3	2	-
Number of adjustable shelves	1	1	-
Number of door bins large / small	1 / 2	1 / 2	-
Dairy compartment	-	-	-
Number of egg racks	2	2	-
KEY FEATURES – FREEZER SECTION			
Number of freezer compartments	-	1	3
SuperFreeze function	-	-	-
Number of ice packs / ice cube trays	- / -	- / -	- / -
FUNCTIONS			
Door open warning signal/malfunction	-	-	-
Holiday / Sabbath mode	- / -	- / -	- / -
PERFORMANCE AND CONSUMPTION			
Energy efficiency class	A++	A++	A++
Annual energy consumption ¹ (kWh)	94	142	142
Total unit net capacity (litres)	135	120	82
Refrigerator net capacity (litres)	135	106	-
Freezer net capacity (litres)	-	14	82
Climate Class ²	SN-T	SN-T	SN-T
Noise level dB (A) re 1 pW	39	39	39
Dimensions of the product (cm) H x W x D	85 x 56 x 58	85 x 56 x 58	85 x 56 x 58

● = yes - = no
¹ Actual energy consumption will depend on how the appliance is used and where it is located
² Climate zone SN = designed to operate in ambient temperature of +10°C to 32°C
Climate zone T = designed to operate in ambient temperature of +18°C to 43°C

American fridge freezers

Serie 8 +++

KAN92LB35G



TYPE	AMERICAN
DESIGN FAMILY	SERIE 8
MODEL NUMBER	KAN92LB35G
Colour of door panels	Black glass
Colour of sides	Chrome Inox-metallic
Style of handle	Integrated vertical handle
Colour of handle	-
noFrost in fridge and freezer	●
Home Connect, WIFI dongle included	-
FOOD FRESHNESS SYSTEM	
vitaFresh	1 vitaFresh plus drawer with telescopic rails 1 MultiBox drawer with telescopic rails 1 Chiller drawer
KEY FEATURES – FRIDGE SECTION	
Product highlights	LED
Super Cool	●
Type of control	Electronic
Number of shelves	4
Number of adjustable shelves	3
Shelves for bottles	-
Number of door bins / shelves	5
Temperature display	Digital
Warning signal door open	Visual and audible
KEY FEATURES – FREEZER SECTION	
Door opened indicator	Visual and audible
Super Freeze function	●
Temperature adjustable in freezer	●
Number of ice cube trays	Twist ice box
Ice dispenser features	-
Number of freezer drawers	2
ADDITIONAL INFORMATION	
Energy efficiency class	A++
Energy consumption annual kWh	385
Total net capacity litres	592
Refrigerator net capacity	375
Freezer net capacity litres	202
Climate class	SN-T
Noise level dB(A) re 1 pW	43
Additional accessories included	2 x ice packs, 1 x egg tray
Height of product mm	1756
Width of product mm	912
Depth of product mm	732



American fridge freezers



TYPE		AMERICAN	AMERICAN	AMERICAN
DESIGN FAMILY		SERIE 6	SERIE 4	SERIE 6
MODEL NUMBER		KAD92AI20G	KAN92VI35	KAG90AI20G
Colour of door panels		Inox-easyclean	Inox-easyclean	Inox-easyclean
Colour of sides		Chrome Inox-metallic	Chrome Inox-metallic	Grey
Style of handle		Vertical bar handle	Integrated vertical handle	Vertical bar handle
Colour of handle		Stainless steel	-	Stainless steel
NoFrost in fridge and freezer		●	●	●
Home Connect, WIFI dongle included		●	-	-
FOOD FRESHNESS SYSTEM				
VitaFresh		1 VitaFresh plus drawer with telescopic rails 1 MultiBox drawer with telescopic rails 1 Chiller drawer	1 VitaFresh drawer with humidity control 1 MultiBox drawer with telescopic rails	2 MultiBox drawers on rails
KEY FEATURES – FRIDGE SECTION				
Product highlights		LED	LED	LED
SuperCool		●	●	●
Type of control		Electronic	Electronic	Electronic
Number of shelves		4	4	3
Number of adjustable shelves		3	3	1
Shelves for bottles		-	-	-
Number of door bins / shelves		4	5	4
Temperature display		Digital	Digital	Digital
Warning signal door open		Visual and audible	Visual and audible	Visual and audible
KEY FEATURES – FREEZER SECTION				
Door opened indicator		Visual and audible	Visual and audible	Visual and audible
SuperFreeze function		●	●	●
Temperature adjustable in freezer		●	●	●
Number of ice cube trays		Automatic ice cube maker	Twist ice box	Automatic ice cube maker
Ice dispenser features		Crushed Ice, Ice Cubes, Water, Water filter	-	Crushed Ice, Homebar, Ice Cubes, Water, Water filter
Number of freezer drawers		2	2	2
ADDITIONAL INFORMATION				
Energy efficiency class		A+	A++	A+
Energy consumption annual kWh		443	389	432
Total net capacity litres		541	604	522
Refrigerator net capacity		368	387	359
Freezer net capacity litres		158	202	157
Climate class		SN-T	SN-T	SN-T
Noise level dB(A) re 1 pW		43	43	43
Additional accessories included		2 x ice packs, 1 x connection hose, 1 x egg tray	1 x egg tray	1 x connection hose, 1 x egg tray
Height of product mm		1756	1756	1770
Width of product mm		912	912	910
Depth of product mm		732	732	720

● = yes - = no
¹ Actual energy consumption will depend on how the appliance is used and where it is located
² Climate zone SN = designed to operate in ambient temperature of +10°C to 32°C
Climate zone T = designed to operate in ambient temperature of +18°C to 43°C

All models comply with COMMISSION REGULATION (EC) No 1275/2008 with regard to ecodesign requirements for standby and off mode electric power consumption.

Explore more at www.bosch-home.co.uk



AMERICAN		AMERICAN		AMERICAN		AMERICAN	
SERIE 6		SERIE 6		SERIE 6		SERIE 4	
KAD90VI20G		KAI90VI20G		KAD90VB20G		KAN93VIFPG	
Inox-easyclean		Inox-easyclean		Black		Stainless steel	
Grey		Grey		Black		Grey	
Vertical bar handle		Vertical bar handle		Vertical bar handle		Vertical bar handle	
Aluminium		Stainless steel		Stainless steel		Stainless steel	
●		●		●		●	
-		-		-		-	
2 MultiBox drawers on rails		2 MultiBox drawers on rails		2 MultiBox drawers on rails		1 MultiBox drawer with telescopic rails	
LED		LED		LED		LED	
●		●		●		●	
Electronic		Electronic		Electronic		Electronic	
4		4		4		4	
1		-		1		-	
-		-		-		-	
4		4		4		5	
Digital		Digital		Digital		Digital	
Visual and audible		Visual and audible		Visual and audible		Visual and audible	
Visual and audible		Visual and audible		Visual and audible		Visual and audible	
●		●		●		●	
●		●		●		●	
Automatic ice cube maker		Automatic ice cube maker		1 ice cube tray		Twist ice box	
Crushed Ice, Ice Cubes, Water, Water filter		Crushed Ice, Ice Cubes, Water		Crushed Ice, Ice Cubes, Water, Water filter		-	
2		2		2		2	
A+		A+		A+		A++	
436		432		436		363	
533		523		533		560	
370		360		370		371	
157		157		157		189	
SN-T		SN-T		SN-T		SN-T	
43		43		43		42	
1 x connection hose, 1 x egg tray		1 x egg tray		1 x connection hose, 1 x egg tray		1 x egg tray	
1770		1770		1770		1786	
910		910		910		908	
720		720		720		685	

● = yes - = no
¹ Actual energy consumption will depend on how the appliance is used and where it is located
² Climate zone SN = designed to operate in ambient temperature of +10°C to 32°C
Climate zone T = designed to operate in ambient temperature of +18°C to 43°C

All models comply with COMMISSION REGULATION (EC) No 1275/2008 with regard to ecodesign requirements for standby and off mode electric power consumption.

Making **life easy** through innovative technologies

Introducing the Bosch small appliances.

Our award-winning range of appliances isn't just restricted to large models. We also design and engineer high quality vacuum cleaners, irons, steam generators, drinks machines, kettles, toasters, kitchen machines and other food preparation appliances.



Model shown: BCH732KTGB vacuum cleaner
MUM9GX5S21 kitchen machine

Cordless. Charge less.

The Bosch Unlimited cordless vacuum, with two batteries and quick charger, you have continuous run-time in the palm of your hand.

Cleaning on all levels.

You no longer need different devices to clean different parts of your home. Now, you can effectively clean from floor to ceiling. The Unlimited comes with useful accessories (BCS122GB and BCS111GB only) that allow you to clean all kinds of flooring, such as tiles or hard floors, as well as all kinds of surfaces, such as stairs, tables, upholstery and even the ceiling. It is also perfect for vacuuming your car.

Continuous runtime*.

If you want to keep your home clean at all times, you need a device that is always at hand whenever you need it. The Unlimited provides continuous runtime, thanks to **exchangeable battery packs** and a quick charger (EHZUC181GB). One battery can be charged while the other battery is in use, so the device is always ready to go and never runs out of power. Second battery is included with BCS122GB or additional batteries can be purchased separately (BHZUB1830: 3 Ah battery).

Power4All System.

Bosch battery technology ensures powerful performance across all our products. The exchangeable **Power4All System** only requires a single battery pack, which means complete flexibility when charging. The battery is part of our Power4All system so can be used in compatible power tools and lawn and garden products from Bosch.



Quick charger accessory.

Although cordless vacuum cleaners are very convenient, their batteries might not always last as long as you wish. The quick charger accessory (EHZUC181GB)* allows charging the exchangeable batteries of the Power4All System within 60 minutes and therefore extends the Unlimited's runtime.



*Available separately when not included with pack.

*Under 60 minutes charge time with quick charger (EHZUC181GB). Compared to other manufacturers' communicated charge times of cordless sticks in the UK market.

Vacuum cleaners

Unlimited

BCS122GB



VACUUM CLEANERS			
DESIGN FAMILY	SERIE 8	SERIE 8	SERIE 8
MODEL NUMBER	BCS122GB	BCS111GB	BCS101GB
	Multi use	Multi use	Multi use
COLLECTION	UNLIMITED	UNLIMITED	UNLIMITED
POWER & PERFORMANCE			
Runtime (mins)	60	60	60
Volts	18.0	18.0	18.0
Ampere Hour	3	3	3
Batteries included	2	1	1
Removable Power4All batteries	•	•	•
More Power	-	-	-
Superior Performance	-	-	-
CHARGING			
Charge time (hrs)	less than1	5	5
Docking station	•	•	•
Fast charger	•	-	-
FEATURES			
Continuous runtime	•	-	-
All Floors	•	•	•
SmartSensor	-	-	-
Lithium battery	•	•	•
Advanced Lithium battery	•	•	•
HiSpin motor	•	•	•
Performance brush bar	•	•	•
Large, aerodynamic brush bar	•	•	•
Motorised brush head	-	-	-
Cartridge filter cleaning	•	•	•
Auto clean filter	•	•	-
BDLC motor	-	-	-
Additional Features	-	-	-
ACCESSORIES			
Pet	-	-	-
Crevice tool	•	•	•
Upholstery tool	•	•	•
2 in 1 crevice/upholstery tool	•	•	•
Flexible crevice tool	•	•	•
Removeable handheld	•	•	•
Spare filter	-	-	-
ADDITIONAL INFORMATION			
Weight (kg)	2.9	2.9	2.9
Dust Bin size	0.4l	0.4l	0.4l
Performance levels	2	2	2



Flexxo

BBH3251GB



The Flexxo makes it easier to keep your entire home clean. All the tools are integrated directly into the device, allowing for full 360° cleaning to save you time and energy. With an extendible crevice tool, an upholstery brush and clip on furniture brush, you can clean far more than just floors. For small areas, you can use the detachable hand held unit to clean up any mess without having to use the full vacuum cleaner.

VACUUM CLEANERS		
DESIGN FAMILY	SERIE 4	SERIE 4
MODEL NUMBER	BBH3251GB	BBH32101GB
	2in1	2in1
COLLECTION	FLEX XO	FLEX XO
POWER & PERFORMANCE		
Runtime (mins)	55	50
Volts	25.2	21.6
Ampere Hour	-	-
Batteries included	Integrated	Integrated
Removable Power4All batteries	-	-
More Power	-	-
Superior Performance	-	-
CHARGING		
Charge time (hrs)	5	5
Docking station	-	-
Fast charger	-	-
FEATURES		
Continuous runtime	-	-
All Floors	•	•
SmartSensor	-	-
Lithium battery	•	•
Advanced Lithium battery	-	-
HiSpin motor	-	-
Performance brush bar	-	-
Large, aerodynamic brush bar	-	-
Motorised brush head	•	•
Cartridge filter cleaning	-	-
Auto clean filter	-	-
BDLC motor	-	-
Additional Features	-	-
ACCESSORIES		
Pet	-	-
Hose	-	-
Crevice tool	•	•
Upholstery tool	•	•
2 in 1 crevice/upholstery tool	•	•
Flexible crevice tool	-	-
Removeable handheld	•	•
Spare filter	-	-
ADDITIONAL INFORMATION		
Weight (kg)	3.0	3.0
Dust Bin size	0.4l	0.4l
Performance levels	2	2



Vacuum cleaners

Athlet Ultimate

BCH732KTGB

Ultimately, it's the only vacuum you need. The cordless Ultimate vacuum cleaner from Bosch boasts the highest power cleaning performance and a long runtime of up to 75 minutes,** - all that without a cord. Delivering outstanding results on all floor types.

** When used on setting 1

TYPE		VACUUM CLEANER	
DESIGN FAMILY		SERIE 8	
MODEL		BCH732KTGB	
		1in1	
COLLECTION		ATHLET ULTIMATE	
POWER & PERFORMANCE			
Runtime (mins)		75	75
Volts		32.4	32.4
Ampere Hour		-	-
Batteries included		Integrated	Integrated
Removable Power4All batteries		-	-
More Power		+30%	+30%
Superior Performance		+20%	+20%
CHARGING			
Charge time (hrs)		6	6
Docking station		-	-
Fast charger		-	-
FEATURES			
Continuous runtime		-	-
All Floors		●	●
SmartSensor		●	●
Lithium battery		●	●
Advanced Lithium battery		●	●
HiSpin motor		●	●
Performance brush bar		●	●
Large, aerodynamic brush bar		●	●
Motorised brush head		-	-
Cartridge filter cleaning		●	●
Auto clean filter		●	●
BDLC motor		-	-
Additional Features		-	-
ACCESSORIES			
Pet		-	●
Hose		●	●
Crevice tool		●	●
Upholstery tool		●	●
2 in 1 crevice/upholstery tool		-	-
Flexible crevice tool		-	-
Removeable handheld		-	-
Spare filter		-	-
ADDITIONAL INFORMATION			
Weight (kg)		3.3	3.3
Dust Bin size		0.9l	0.9l
Performance levels		3	3



● = Yes - = No



MODEL NUMBER	BBH65PETGB	BBH65KITGB	BCH6PETGB	BCH625K2GB	BCH6HYGGB
	1in1	1in1	1in1	1in1	1in1
SERIES	6	6	4	4	4
COLLECTION	ATHLET	ATHLET	ATHLET	ATHLET	ATHLET
POWER & PERFORMANCE					
Runtime (mins)	65	65	60	60 mins	60 mins
Volts	25.2	25.2	25.2	25.2V	25.2V
Ampere Hour	-	-	-	-	-
Batteries included	Integrated	Integrated	Integrated	Integrated	Integrated
Removable Power4All batteries	-	-	-	-	-
More Power	+20%	+20%	-	-	-
Superior Performance	-	-	-	-	-
CHARGING					
Charge time (hrs)	6	6	6	6	6
Docking station	-	-	-	-	-
Fast charger	-	-	-	-	-
FEATURES					
Continuous runtime	-	-	-	-	-
All Floors	●	●	●	●	●
SmartSensor	●	●	●	●	●
Lithium battery	●	●	●	●	●
Advanced Lithium battery	●	●	-	-	-
HiSpin motor	●	●	-	-	-
Performance brush bar	●	●	-	-	-
large, aerodynamic brush bar	-	-	-	-	-
Motorised brush head	●	●	●	●	●
Cartridge filter cleaning	-	-	-	-	-
Auto clean filter	-	-	-	-	●
BDLC motor	-	-	-	-	-
Additional Features	-	-	-	-	-
ACCESSORIES					
Pet	●	-	●	-	-
Hose	●	●	●	●	-
Crevice tool	●	●	●	●	-
Upholstery tool	●	●	●	●	-
2 in 1 crevice/upholstery tool	-	-	-	-	-
Flexible crevice tool	-	-	-	-	-
Removeable handheld	-	-	-	-	-
Spare filter	●	-	●	-	●
ADDITIONAL INFORMATION					
Weight (kg)	3.3	3.3	3.3	3.3 kg	3.3 kg
Dust Bin size (litres)	0.9	0.9	0.9	0.9	0.9
Performance levels	3	3	3	3	3

● = Yes - = No

Vacuum cleaners



MODEL NUMBER	BCH6ATH1GB	BCH625KTGB	BBHL2D18GB	BBHL2M21GB	BBHL2R21GB
	1in1	1in1	2in1	2in1	2in1
SERIES	4	4	2	2	2
COLLECTION	ATHLET	ATHLET	READY'YY	READY'YY	READY'YY
POWER & PERFORMANCE					
Runtime (mins)	60 mins	60 mins	40	45	45
Volts	25.2V	25.2V	18.0	21.6	21.6
Ampere Hour	-	-	-	-	-
Batteries included	Integrated	Integrated	Integrated	Integrated	Integrated
Removable Power4All batteries	-	-	-	-	-
More Power	-	-	-	-	-
Superior Performance	-	-	-	-	-
CHARGING					
Charge time (hrs)	6 hours	6 hours	5	5	5
Docking station	-	-	-	-	-
Fast charger	-	-	-	-	-
FEATURES					
Continuous runtime	-	-	-	-	-
All Floors	●	●	●	●	●
SmartSensor	●	●	-	-	-
Lithium battery	●	●	●	●	●
Advanced Lithium battery	-	-	-	-	-
HiSpin motor	-	-	-	-	-
Performace brush bar	-	-	-	-	-
large, aerodynamic brush bar	-	-	-	-	-
Motorised brush head	●	●	●	●	●
Cartridge filter cleaning	-	-	-	-	-
Auto clean filter	-	-	-	-	-
BDLC motor	-	-	-	-	-
Additional Features	-	-	-	-	-
ACCESSORIES					
Pet	-	-	-	-	-
Hose	●	●	-	-	-
Crevice tool	●	●	●	●	●
Upholstery tool	●	●	-	-	-
2 in 1 crevice/upholstery tool	-	-	●	●	●
Flexible crevice tool	-	-	-	-	-
Removable handheld	-	-	●	●	●
Spare filter	●	-	-	-	-
ADDITIONAL INFORMATION					
Weight (kg)	3.3 kg	3.3 kg	2.5	2.5	2.5
Dust Bin size	0.9	0.9	0.4l	0.4l	0.4l
Performance levels	3	3	2	2	2

● = Yes - = No

Explore more at www.bosch-home.co.uk

With **AutoCook** you can.

Welcome to a new way of cooking. With AutoCook, you can bake, steam, sauté and roast your way to tasty dishes with one, easy to use appliance.

Includes
FREE
recipe book
and app



50 preset programmes

You can preset the perfect temperature and cooking times for your chosen dish, and even store your own recipes.

Innovative induction technology

Our perfect heat distribution and precise temperature settings guarantee tasty results every time.

Pressure cooking function with steam pressure

The gentle cooking method retains vitamins and minerals while reducing cooking time by up to 60%.

Large 5L stainless steel bowl

This sizeable stainless steel bowl has a non-stick coating that prevents food from burning and is the perfect size for family-sized portions.

Easy to clean

The bowl and other accessories are all dishwasher-safe.

Bring tasty back to mealtimes with...

- ✓ Perfectly delicious dishes every time you cook.
- ✓ 16 different ways to cook with one appliance.
- ✓ No burning or boiling over ever again.
- ✓ Quick pressure cooking and induction technology.
- ✓ A delayed start option so your meals are always freshly cooked.
- ✓ Over 100 recipe ideas with your free book and app.

PRODUCT RANGE		MULTICOOKER AUTOCOOK / AUTOCOOK PRO	
MODEL NUMBER		MUC88B68GB	
Value class name		Premium	
BRAND		BOSCH	
Housing colour		-	
Secondary colour		-	
Housing material		Stainless steel	
Lid		●	
Window		-	
Wattage/ Power (W)		1.200	
Display		LED indication	
Display language		EN	
Heating		Induction	
Pressure cooking		●	
Keep warm function		●	
Start delay (hrs)		12	
Temperature		Max (°C)	160
		Min (°C)	40
		Steps	5°C steps
Bowl (max 5.000 ml/ usable 4.000ml)		-	
Number of programs		50 PC	
Individual programs with memory function		2	
KIND OF PROGRAMS			
RU Software			
Aspic / Baking / Cooking / Fry / Jam / Krupy Rice / Legumes / Pasta / Pilaf / Rice pudding / Soft fry / Soup (Borsch) / Steam / Stew / Warm up / Yogurt			
EU Software			
Baking / Cooking / Fry / Jam / Legumes / Pasta / Rice / Risotto / Rice pudding / Soft fry / Sous Vide / Soup / Steam / Stew / Warm up / Yogurt			
CN Software			
Baking / Cooking / Fry / Jam / Porridge CN / Pasta / Pizza / Rice CN / Soft fry / Sous Vide / Soup / Steak / Steam / Stew / Warm up / Yogurt			
ACCESSORIES			
Deep fry sieve		●	
Steam tray		-	
Measure cup		●	
Spoon		●	
Spatula		●	
Steaming basket		●	
Handle tool		-	
Storage - cable compartment		Without cable	
Plug-type		GB plug	
Safety features		Overheat protection Yes	
Suction feet for extra stability		Rubber feet	
RECIPES			
Booklet		Separate enclosure	
No. of recipes		>100	
Languages		English	

Making **life easy** through innovative technologies

Bosch makes it, easy.

Our multi-functional kitchen machines, food mixers and processors are packed with innovative, labour-saving technology so you can chop, blend, shred, mix and whisk your way more quickly through your food preparation task.



Perfectly mixed ingredients.

Your ingredients will be perfectly mixed thanks to the 3D mixing system. Simply add your ingredients to the bowl and let the mixer do the work for you. The unique stirring movement is designed to ensure that all of your ingredients are thoroughly mixed, and nothing is left stuck to the side of the bowl.

Make sense of mixing with OptiMUM.

Intuitive sensor technology and incredible versatility means the OptiMUM easily takes care of all your mixing, weighing, chopping and blending.

Offering everything-in-one, this kitchen machine makes cooking and baking a whole lot easier for you. Including a huge variety of professional accessories for all your cooking and baking ideas, this is the only kitchen machine you will ever need to bring your recipes to life.

Perfect results at the touch of a button.

Another smart feature of the OptiMUM is its highly sensitive sensors that measure the consistency of the ingredients and stop automatically at exactly the right time. So, you'll always have perfect results at the touch of a button – whether it's dough, whipped cream or egg whites. And rather than keeping an eye on the machine, you'll be free to do something else.

3D Mixing.

The mixing tool is rotated in three different directions, this ensures all the ingredients are perfectly mixed and nothing remains stuck to the sides of the bowl, eliminating the need to use a spatula as well.

The large stainless steel mixing bowl with 5.5L capacity and two handles further guarantees ease of use.

Integrated scales.

The OptiMUM makes life even easier thanks to the built-in scales that accurately weigh all your ingredients as you add them to the bowl, saving you cleaning additional bowls.

Food preparation



TYPE		OPTIMUM KITCHEN MACHINE		OPTIMUM KITCHEN MACHINE		OPTIMUM KITCHEN MACHINE	
BRAND		K4 – OPTIMUM		K4 – OPTIMUM		K4 – OPTIMUM	
MODEL		MUM9GX5S21		MUM9GT4S00		MUM9G32S00	
Housing colour Side panel colour Housing material Wattage/ Power (W) SensorControl (egg whites/ cream/ yeast dough) Scale Timer Speed settings On/Off switch with LED indication Gentle start Bowl with anti-splash cover (SAN)	Housing colour	platinum silver		platinum silver		platinum silver	
	Side panel colour	Black		Black		Black	
	Housing material	Metal		Metal		Metal	
	Wattage/ Power (W)	1.500 W		1.400 W		1.200 W	
	SensorControl (egg whites/ cream/ yeast dough)	●		●		-	
	Scale	●		●		-	
	Timer	●		●		-	
	Speed settings	7-stage		7-stage		7-stage	
	On/Off switch with LED indication	Illuminated ON / OFF switch		Illuminated ON / OFF switch		none	
	Gentle start	●		●		●	
Stirring concept Parking position Tools (stainless steel)	Bowl with anti-splash cover (SAN)	Stainless steel	-	-	-	-	-
		Plastic	-	-	-	-	-
	Volume bowl (l)	5,50 l	-	5,50 l	-	5,50 l	-
	Max. flour + ingredient (kg)	1,50 kg	-	1,50 kg	-	1,50 kg	-
	Max. dough capacity yeast dough (kg)	-	-	-	-	-	-
	Max. dough capacity sponge mixture (kg)	3,5 kg	-	3,5 kg	-	3,5 kg	-
	Stirring concept	MultiMotion Drive		MultiMotion Drive		MultiMotion Drive	
	Parking position	-		-		-	
	Tools (stainless steel)	Stirring whisk	-	-	-	-	-
		Beating whisk	●	●	●	●	●
ACCESSORIES/ NUMBER		Dough hook	●	●	●	●	●
		Professional Absolute stirring whisk	●	-	-	-	-
		Professional Steering & beating whisk	-	-	-	-	-
	Colour coding	●		●		●	
	Blender/ jar with scale	Plastic blender/ jar blender/ jar	-	-	-	-	-
		Glass blender/ jar	●	-	-	-	-
		rpm	8.500 min-1	8.500 min-1	8.500 min-1	8.500 min-1	8.500 min-1
	ToGo bottle with drinking lid, BPAfree	-		-		-	
	Glass grinder (detach. stainl. st. knife, dishw. safe)	-		-		-	
	Glass chopper (detach. stainl. st. knife, dishw. safe)	-		-		-	
Meat mincer	Glass containers with storage lid	-		-		-	
	Continuous shredder with stainless steel discs	●		-		-	
	Multi mixer with stainless steel discs	-		-		-	
	Number of discs/ functions continuous shredder	●		-		-	
	Reversible slicing disc thick/ thin	●		-		-	
	Reversible shredding disc coarse/ fine	-		-		-	
	Rough grating disc	●		-		-	
	Grating disc medium/ fine	-		-		-	
	ProfessionalSuperCut disc	-		-		-	
	Asia-vegetable/ Julienne disc	-		-		-	
Citrus press	Diameter 3 mm disc holes	-		-		-	
	Diameter 5 mm disc holes	-		-		-	
	Diameter 8 mm disc holes	-		-		-	
	Fancy biscuit attachment	-		-		-	
	Citrus press	-		-		-	
	Cube cutter with cleaning brush	insert with 0,9 x 0,9 cm	-	-	-	-	-
		insert with 1,3 x 1,3 cm	-	-	-	-	-
	Storage	Cable storage	Auto. cable retraction	Auto. cable retraction	Auto. cable retraction	Cable storage compartment	-
		Accessory holder	-	-	-	-	-
		Accessory bag/ grey	-	-	-	-	-
Plug-type		Accessory bag/ red	-	-	-	-	-
	Plug-type	GB plug	GB plug	GB plug	GB plug	GB plug	GB plug
	Safety features	Overload protection	-	-	-	-	-
		Safety lock	-	-	-	-	-
		Suction feet for extra stability	Rubber feet	Suction foot	Suction foot	Suction foot	Suction foot
RECIPES	Booklet	Integrated in		Integrated in		Integrated in	
	DVD	-		-		-	
	Languages	Arabic, Chinese, Chinese trad(zh-tw) English, Malay		Arabic, Chinese, Chinese trad(zh-tw) English, Malay		Arabic, Chinese, Chinese trad(zh-tw) English, Malay	
		-		-		-	
		-		-		-	
		-		-		-	
		-		-		-	
		-		-		-	
		-		-		-	
		-		-		-	
		-		-		-	

● = Yes - = No

Food preparation



TYPE		KITCHEN MACHINE		KITCHEN MACHINE	
BRAND		MUM5		MUM4	
MODEL		MUM57830GB		MUM4807GB	
Housing colour		mystic black		White	
Side panel colour		Brushed stainless		White	
Housing material		Plastic		Plastic	
Wattage/ Power (W)		900 W		600 W	
SensorControl (egg whites/ cream/ yeast dough)		-		-	
Scale		-		-	
Timer		-		-	
Speed settings		7-stage		4-stage	
On/Off switch with LED indication		LED indicator		-	
Gentle start		●		●	
Bowl with anti-splash cover (SAN)	Stainless steel	●		●	
	Plastic	-		-	
Volume bowl (l)		3,90 l		3,90 l	
Max. flower + ingredience (kg)		0.75 kg		0.75kg	
Max. dough capacity yeast dough (kg)		-		1.0 kg	
Max. dough capacity sponge mixture (kg)		2,0 kg		2.0 kg	
Stirring concept		MultiMotion Drive		MultiMotion Drive	
Parking position		Yes		Yes	
Tools (stainless steel)	Stirring whisk	●		-	
	Beating whisk	-		-	
	Dough hook	●		●	
	Professional Absolute stirring whisk	●		-	
	Professional Steering & beating whisk	●		-	
ACCESSORIES/ NUMBER					
Colour coding		-		-	
Blender/ jar with scale	Plastic blender/ jar blender/ jar	●		-	
	Glass blender/ jar	-		-	
	Volume usable.xml	-		-	
	Volume max.xml	-		-	
	rpm	14.000 min-1		12.250 min-1	
ToGo bottle with drinking lid, BPAfree		-		-	
Glass grinder (detach. stainl. st. knife, dishw. safe)		-		-	
Glass chopper (detach. stainl. st. knife, dishw. safe)		-		-	
Glass containers with storage lid		-		-	
Continuous shredder with stainless steel discs		●		-	
Multi mixer with stainless steel discs		-		-	
Number of discs/ functions continuous shredder		-		-	
	Reversible slicing disc thick/ thin	●		-	
	Reversible shredding disc coarse/ fine	-		-	
	Rough grating disc	●		-	
	Grating disc medium/ fine	●		-	
	ProfessionalSuperCut disc	-		-	
	Asia-vegetable/ Julienne disc	-		-	
Meat mincer	Diameter 3 mm disc holes	-		-	
	Diameter 5 mm disc holes	-		-	
	Diameter 8 mm disc holes	-		-	
	Fancy biscuit attachment	-		-	
	Citrus press	●		-	
Cube cutter with cleaning brush	insert with 0,9 x 0,9 cm	-		-	
	insert with 1,3 x 1,3 cm	-			
Storage	Cable storage	Auto. cable retraction		Cable storage compartment	
	Accessory holder	-		-	
	Accessory bag/ grey	●		-	
	Accessory bag/ red	-		-	
Plug-type		GB plug		GB plug	
Safety features	Overload protection	-			
	Safety lock	-		-	
	Suction feet for extra stability	Rubber feet		Rubber feet	
RECIPES					
	Booklet	Separate enclosure		-	
	DVD	-		●	

● = Yes - = No



Type		Kitchen Machine	Kitchen Machine	Kitchen Machine	Kitchen Machine	Kitchen Machine	Kitchen Machine
Brand		Multitalent8	Multitalent8	Multitalent3	Multitalent3	Multitalent3	Multitalent3
Model		MC812S734G	MC812M853G	MCM3100WGB	MCM3501MGB	MCM3500MGB	MCM3301BGB
Housing colour		White	Black	White	Black	White	Black
Front colour		Brushed stainless steel	Brushed stainless steel	Grey	Brushed stainless steel	Brushed stainless steel	Black
Housing material		Plastic	Plastic	Plastic	Plastic	Plastic	Plastic
Wattage/ Power (W)		1.200 W	1.250 W	700 W	800 W	800 W	800 W
Speed settings		Infinitely variable	Infinitely variable	2-stage	2-stage	2-stage	2-stage
Pulse function		-	-	-	-	-	-
LED		Illuminated ON / OFF switch	Illuminated ON / OFF switch	-	-	-	-
Bowl (BPAfree)	M: plastic (vol max xml/ usable 2.300ml)	-	-	●	●	●	●
	L: plastic (vol max 3.900ml/ usable 2.400ml)	●	●	-	-	-	-
Max. flower + ingredient (kg)		1,50 kg	1,50 kg	0,80 kg	0,80 kg	0,80 kg	0,80 kg
Max. dough capacity sponge mixture (kg)		1,5 kg	1,5 kg	0,8 kg	0,8 kg	0,8 kg	0,8 kg
Knife (stainless steel)	M:Universal knife	●	●	●	●	●	●
	L: serrated knife	●	●	-	-	-	-
Accessories/ Number							
Whisk		●	●	-	-	-	-
Beating disc		-	-	●	●	●	●
Dough hook		-	-	-	-	-	-
	Plastic	-	-	●	●	●	●
	Metal	-	●	-	-	-	-
No. of stainless steel discs:		-	-	-	-	-	-
Reversible Slicing & Shredding Disc		-	-	●	-	●	-
Reversible slicing disc thick/ thin		●	●	-	●	-	●
Reversible shredding disc coarse/ fine		●	●	-	●	-	●
SuperCut disc		●	-	-	-	-	-
Asia-vegetable/ Julienne disc		-	●	-	-	-	-
No. of inserts (only MCM4)		-	-	-	-	-	-
Slicing fine		-	-	-	-	-	-
Slicing coarse/ thick		-	-	-	-	-	-
Shredding fine		-	-	-	-	-	-
Shredding medium		-	-	-	-	-	-
Blender/ jar (BPAfree, lid)		●	●	-	●	●	●
S: material (vol max xml/ usable 1.000ml)		-	-	-	-	-	-
M: material (vol max xml/ usable 1.250ml)		-	-	-	-	-	-
L: material (vol max xml/ usable 1.500ml)		-	-	-	-	-	-
rpm		15.000 min-1	15.000 min-1	17.000 min-1	17.000 min-1	17.000 min-1	17.000 min-1
Citrus Press		●	●	-	-	-	-
Centrifugal Juicer		-	-	-	-	-	-
Small chopper		-	●	-	●	-	-
Small mill		-	-	-	●	-	-
Cube cutter		-	-	-	-	-	-
Storage		-	-	-	-	-	-
	Cable compartment	Cable storage compartment	Cable storage compartment	Cable storage compartment	Cable storage compartment	Cable storage compartment	Cable storage compartment
	Accessories	accessory bag dark grey	accessory bag dark grey	Standard acc. in the bowl	Standard acc. in the bowl	Standard acc. in the bowl	Standard acc. in the bowl
Plug-type		GB plug	GB plug	GB plug	GB plug	GB plug	GB plug
Safety features		-	-	-	-	-	-
	Knife guard	-	-	●	●	●	●
	Suction feet for extra stability	Suction foot	Suction foot	Suction foot	Suction foot	Suction foot	Suction foot
RECIPES							
Booklet		-	-	-	-	-	-

● = Yes - = No

Handheld blenders

Bosch handheld kitchen blenders provide practical and powerful blending at the press of a button. Innovative technology and a range of accessories can transform your Bosch stick blender into a versatile and enviable kitchen gadget for blending, chopping, whisking and beating.



TYPE	HAND BLENDER	HAND BLENDER	HAND BLENDER	HAND BLENDER	HAND BLENDER	HAND BLENDER
DESIGN FAMILY	MAXOMIXX	ERGOMIXX	ERGOMIXX	ERGOMIXX	CLEVERMIXX	CLEVERMIXX
MODEL	MSM88160GB	MSM66135GB	MSM6S50BGB	MSM6S55BGB	MSM24100GB	MSM2623GGB
Value class name	MaxoMixx	ErgoMixx	ErgoMixx	ErgoMixx	CleverMixx	CleverMixx
Housing colour	Black	White	Piano black	Piano black	White	White
Secondary colour	Brushed stainless steel	Window grey	Brushed stainless steel	Brushed stainless steel	Deep red	Vivid green
Housing material	Plastic with stainless steel	Plastic	Plastic with stainless steel	Plastic with stainless steel	Plastic	Plastic
Wattage/ Power (W)	800 W	600 W	750 W	750 W	400 W	600 W
SoftTouch	yes	yes	yes	yes	no	no
Speed	14.700 min-1	11.200 min-1	14.500 min-1	14.500 min-1	13.000 min-1	15.000 min-1
Foot	Settings	12-stage	12-stage	12-stage	1-stage	1-stage
	Turbo function	●	●	●	●	-
		-	-	-	-	-
	Stainless steel	●	●	●	●	●
	Plastic (BPAfree)	-	-	-	-	-
	M: QuattroBlade knife with 4 blades	-	●	●	-	-
	L: QuattroBlade Pro + 4 knives	●	-	-	-	-
	Mini foot	-	-	-	-	●
	Masher foot	-	-	-	-	-
		-	-	-	-	-
ACCESSORIES:						
Beaker		●	●	●	●	●
	lid	-	●	-	-	-
Chopper with lid		●	-	●	-	●
	XL VarioChopper (max vol 1100ml/ usable vol 500ml)	-	-	-	-	-
	Ice crush knife	-	-	-	-	-
	Lid	-	-	-	-	-
Whisk, stainless steel		●	●	●	●	●
Food Processor (w. st. steel chopping knife)		-	-	-	-	-
	Slicing disc inserts thin	-	-	-	-	-
	Slicing disc inserts thick	-	-	-	-	-
	Shredding disc inserts	-	-	-	-	-
	Grating disc inserts	-	-	-	-	-
	Kneading tool (plastic/ BPAfree)	-	-	-	-	-
	Cube cutter insert with 0,9 x 0,9 cm	-	-	-	-	-
	Cube cutter insert with 1,3 x 1,3 cm	-	-	-	-	-
	Helix cord	-	-	-	-	-
	Hanging loop	●	-	-	-	-
Safety features		-	-	-	-	-
	Overhead protection	●	-	●	●	-
RECIPES						
	Booklet	Without	Without	Without	Without	Separate enclosure

● = Yes - = No

Hand mixers

Bosch hand mixers and electric whisks add finesse to your cooking and a splash of colour to your kitchen. Bosch mixers are designed to deliver powerful performance whether mixing, whipping or kneading, while barely making a sound.



TYPE	HAND MIXER	HAND MIXER	HAND MIXER	HAND MIXER
DESIGN FAMILY	ERGOMIXX	CLEVERMIXX	CLEVERMIXX	CLEVERMIXX
MODEL	MFQ3030GB	MFQ24200GB	MFQ2420GB	MFQ36300GB
Value class name	ErgoMixx	CleverMixx	CleverMixx	CleverMixx
Housing colour	White	White	Piano black	White
Secondary colour	Red	Silver	Silver	Red
Housing material	Plastic	Plastic	Plastic	Plastic
Wattage/ Power (W)	400 W	400 W	400 W	350 W
SoftTouch	no	no	no	no
Speed	1.000 min-1	1.050 min-1	1.050 min-1	1.050 min-1
Settings	5-stage	4-stage	4-stage	4-stage
	Pulse = Turbo	-	-	-
Connection for accessories	-	-	-	-
Stand 'n' bowl (plastic)	-	-	-	-
Max. capacity (ml)	-	-	-	-
ACCESSORIES:				
Beater, stainless steel		-	-	-
	Standard	-	-	●
	Turbo	-	●	-
Hooks, stainless steel	FineCreamer	●	-	-
		-	-	-
	Standard	●	●	●
Beaker	Turbo	-	-	-
		-	-	-
Chopper	Lid	-	-	-
		-	-	-
Blender foot	Ice crush knife	-	-	-
	lid	-	-	-
Eject button (for beater/ hooks)		-	-	-
	Stainless steel	-	-	-
	Plastic (BPAfree)	-	-	-
		●	●	●

● = Yes - = No

Kettles & toasters

With the elegant design and the latest heating technology that features across our range, the Sky toaster and kettle help start every morning the right way.



With TouchControl display to allow you to select your desired temperature.

TYPE		TOASTER	
DESIGN FAMILY		SKY	
MODEL		TAT7201GB	TAT7203GB
Main colour		Stainless steel	Black
Secondary colour		White	-
Type of toaster		Compact toaster	
Material		Stainless steel	
Wattage / Power (W)		860 - 1.050 W	
CHARACTERISTICS			
Defrost function		●	
Reheat function		●	
Stop function		●	
High-lift		●	
Bun warmer		Integrated	
Crumb tray		●	
Thick & thin function		●	
Toasting degree selector		Inf. variable rotary control	
Automatic shut off at end of roasting cycle		●	
Automatic shut off when toast gets jammed		●	
Heating type		Large-surface heating element	
DIMENSIONS			
HxWxD mm		184x155x292	
Size of roasting chamber (LxWxD mm)		-	
POWER SUPPLY			
Voltage (V)		220-240 V~	
Frequency (Hz)		50/60 Hz	
Plug type		GB plug	
Cable length (cm)		90,0 cm	

TYPE		KETTLE	
DESIGN FAMILY		SKY	
MODEL		TWK7201GB	TWK7203GB
Main colour		Stainless steel	Black
Secondary colour		White	-
PRODUCT SPECIFICATION			
Connection Rating (W)		3000	
Voltage (V)		220-240	
Frequency (Hz)		50/60	
Length electrical supply cord (cm)		80.0	
Plug type		GB plug	
Approval certificates		CE, VDE	
Material body		Stainless steel	
Capacity (l)		1.70	
Power on indicator		●	
Water level indicator		Readable from outside	
Lift-Switch_Off		●	
Filter		Plastic scale filter	
Button for opening lid		●	
Cordless		●	
DESCRIPTION			
<ul style="list-style-type: none">• 1.7 l capacity • Wattage: 2500-3000 W • one-cup minimum indicator: for small amounts (300ml) • Water level indicator readable from outside• Cordless, 360° rotary base • Stainless steel interior base with concealed heating element • Removable limescale filter • Button for opening lid • Safety locking lid• TemperatureControl: Temperature setting at 70°C, 80°C, 90°C, 100°C • Keep Warm Function • on/off switch with separate power indicator• Automatic switch-off: kettle automatically switches off when water has boiled • Boil-dry and overheat protection • Lift switch off: the kettle automatically switches off when removed from its base • Large opening for easy cleaning • Acoustic ready signal • Non-slip feet on base • Easy storage: Cord keeper for simple and quick storage of the cable			
● = Yes - = No			

Small appliances						
66 67						
KETTLES						
TYPE	KETTLE	KETTLE	KETTLE	KETTLE	KETTLE	KETTLE
DESIGN FAMILY	STYLINE	STYLINE	STYLINE SENSOR	STYLINE SENSOR	ANTHRACITE	CITY
MODEL	TWK8633GB	TWK8631GB	TWK86101GB	TWK86103GB	TWK7105GB	TWK7101GB
Main colour	Black	White	White	Black	Anthracite	Stainless steel
Secondary colour	Black	Anthracite	Anthracite	Anthracite	Black	Black
PRODUCT SPECIFICATION						
Connection Rating (W)	3000	3000	3000	3000	3000	3000
Voltage (V)	220-240	220-240	220-240	220-240	220-240	220-240
Frequency (Hz)	50/60	50/60	50/60	50/60	50/60	50/60
Length electrical supply cord (cm)	80.0	80.0	80.0	80.0	80.0	80.0
Plug type	GB plug	GB plug	GB plug	GB plug	GB plug	GB plug
Approval certificates	CE, VDE	CE, VDE	CE, VDE	CE, VDE	CE, VDE	CE, VDE
Material body	Plastic w. stainl.steel appl.	Plastic w. stainl.steel appl.	Plastic w. stainl.steel appl.	Plastic w. stainl.steel appl.	Stainless steel	Stainless steel
Capacity (l)	1.50	1.50	1.50	1.50	1.70	1.70
Power on indicator	●	●	●	●	●	●
Water level indicator	Both-sided for left/right hand, Readable from inside, Readable from outside	Both-sided for left/right hand, Readable from inside, Readable from outside	Both-sided for left/right hand, Readable from inside, Readable from outside	Both-sided for left/right hand, Readable from inside, Readable from outside	Readable from outside, with cup scale	Readable from outside, with cup scale
Lift-Switch_Off	●	●	●	●	●	●
Filter	Scale filter in pouring spout	Scale filter in pouring spout	Scale filter in pouring spout	Scale filter in pouring spout	Plastic scale filter	plastic scale filter
Button for opening lid	●	●	●	●	●	●
Cordless	●	●	●	●	●	●
Description	1.5 l capacity • Wattage: 3000 W, TemperatureControl: Temperature setting at 70°C, 80°C, 90°C, 100°C, Keep Warm Function • Cordless, 360° rotary base, Stainless steel interior base with concealed heating element, Removable stainless steel limescale filter • large water window: good visibility for right and left handed persons, Button for opening lid, Acoustic ready signal, Safety locking lid, Boil-dry and overheat protection, Anti slip 'soft touch' handle, Easy storage: Cord keeper for simple and quick storage of the cable		1.5 l capacity, Wattage: 3000 W, TemperatureControl: Temperature setting at 70°C, 80°C, 90°C, 100°C, Keep Warm Function, Cordless, 360° rotary base, Stainless steel interior base with concealed heating element, Removable stainless steel limescale filter, large water window: good visibility for right and left handed persons, Button for opening lid, Safety locking lid, Boil-dry and overheat protection, Easy storage: Cord keeper for simple and quick storage of the cable		1.7 l capacity, Wattage: 2500-3000 W, Stainless steel interior base with concealed heating element, Removable limescale filter, Cordless, 360° rotary base, Water level indicator readable from outside, Button for opening lid, Safety locking lid, Lighted on-off switch, Automatic switch-off: kettle automatically switches off when water has boiled, Lift switch off: the kettle automatically switches off when removed from its base, Boil-dry and overheat protection, Easy storage: Cord keeper for simple and quick storage of the cable	

● = Yes - = No

TOASTERS			
SKY			
TAT8611GB TAT861GB TAT6A913GB			
Type of toaster	Compact toaster	Compact toaster	Compact toaster
Main colour	White	Black	Stainless steel
Secondary colour	Anthracite	Black	Black
Material	Stainless steel	Stainless steel	Stainless steel
Wattage / Power (W)	860 W	860 W	860 - 1.050 W
CHARACTERISTICS			
Defrost function	●	●	●
Reheat function	●	●	●
Stop function	●	●	●
High-lift	●	●	-
Bun warmer	Integrated	Integrated	Integrated
Crumb tray	●	●	●
Thick & thin function	●	●	●
Toasting degree selector	LED display w. memory function	LED display w. memory function	Inf. variable rotary control
Automatic shut off at end of roasting cycle	●	●	●
Automatic shut off when toast gets jammed	●	●	●
Heating type	Quartz glass heater	Quartz glass heater	Large-surface heating element
DIMENSIONS			
HxWxD mm	184x313x170	184x313x170	184x155x292
POWER SUPPLY			
Voltage (V)	220-240 V~	220-240 V~	220-240 V~
Frequency (Hz)	50/60 Hz	50/60 Hz	50/60 Hz
Plug type	GB plug	GB plug	GB plug
Cable length (cm)	105,0 cm	105,0 cm	90,0 cm

Kettles & toasters



TYPE	KETTLE	KETTLE	KETTLE	KETTLE
DESIGN FAMILY	CITY	VILLAGE	VILLAGE	VILLAGE
MODEL	TWK7105GB	TWK76033GB	TWK7601GB	TWK76075GB
Main colour	Stainless steel	Black	White	Cream
Secondary colour	Black	Black	Light grey	Anthracite
PRODUCT SPECIFICATION				
Connection Rating (W)	3000	3000	3000	3000
Voltage (V)	220-240	220-240	220-240	220-240
Frequency (Hz)	50/60	50/60	50/60	50/60
Length electrical supply cord (cm)	80.0	70.0	70.0	70.0
Plug type	GB plug	GB plug	GB plug	GB plug
Approval certificates	CE, VDE	CE	CE	CE
Material body	Stainless steel	Plastic	Plastic	Plastic
Capacity (l)	1.70	1.70	1.70	1.70
Power on indicator	●	●	●	●
Water level indicator	Both-sided for left/right hand, Readable from outside, with cup scale	Both-sided for left/right hand, Readable from outside	Both-sided for left/right hand, Readable from outside	Both-sided for left/right hand, Readable from outside
Lift-Switch_Off	●	●	●	●
Filter	plastic scale filter	Plastic scale filter	Plastic scale filter	Plastic scale filter
Button for opening lid	●	●	●	●
Cordless	●	●	●	●
Description	1.7 l capacity, Wattage: 2500-3000 W, Stainless steel interior base with concealed heating element, Removable limescale filter, Cordless, 360° rotary base, Water level indicator readable from outside, Button for opening lid, Safety locking lid, Lighted on-off switch, Automatic switch-off: kettle automatically switches off when water has boiled, Lift switch off: the kettle automatically switches off when removed from its base, Boil-dry and overheat protection, Easy storage: Cord keeper for simple and quick storage of the cable			

● = Yes - = No



TYPE	TOASTER	TOASTER	TOASTER
DESIGN FAMILY	VILLAGE	VILLAGE	VILLAGE
MODEL	TAT3A0175G	TAT3A0133G	TAT3A011GB
Type of toaster	Compact toaster	Compact toaster	Compact toaster
Main colour	Cream	Black	White
Secondary colour	Black grey	Black	Light grey
Material	Plastic	Plastic	Plastic
Wattage / Power (W)	825 - 980 W	825 - 980 W	825 - 980 W
CHARACTERISTICS			
Defrost function	Integrated in toasting knob	Integrated in toasting knob	Integrated in toasting knob
Reheat function	●	●	●
Stop function	●	●	●
High-lift	●	●	●
Bun warmer	Integrated	Integrated	Integrated
Crumb tray	●	●	●
Thick & thin function	●	●	●
Toasting degree selector	Inf. variable rotary control	Inf. variable rotary control	Inf. variable rotary control
Automatic shut off at end of roasting cycle	●	●	●
Automatic shut off when toast gets jammed	●	●	●
Heating type	Large-surface heating element	Large-surface heating element	Large-surface heating element
DIMENSIONS			
HxWxD mm	190x310x160	190x310x160	190x310x160
POWER SUPPLY			
Voltage (V)	220-240 V~	220-240 V~	220-240 V~
Frequency (Hz)	50/60 Hz	50/60 Hz	50/60 Hz
Plug type	GB plug	GB plug	GB plug
Cable length (cm)	100.0 cm	100.0 cm	100.0 cm

Explore more at www.bosch-home.co.uk

Tassimo coffee machines



Bosch Tassimo MY WAY is a hot drinks machine that combines innovative technology and contemporary design to make customised coffees at the touch of a button. Personalisation settings offer the flexibility to change the temperature, size and strength of drinks to suit everybody's taste, with memory function to save up to 4 user profiles.



Red

White

TYPE	MY WAY TASSIMO
BLACK	TAS6002GB
RED	TAS6003GB
WHITE	TAS6004GB
KEY FEATURES	
INTELLIBREW barcode reader	●
One Touch Operation	●
Multi Beverage	●
Removeable Water Tank	●
Transparent Water Tank	●
Water Tank Size	1.3L
Water Level Gauge	●
Colour Alternatives	●
Smart Start	-
Brita Maxtra Water Filter	-
Power Output	1500 Watts
Pump Pressure	3.3 Bar
Adjustable Cup Stand	●
Removeable Drip Tray	●
Auto Shut-off	●
Automatic Cleaning & Descaling Programme	●
Descal Warning Feature	●
Dishwasher Safe Parts	●
Personalisation Settings	●
Sensor-Touch Interface	●
Appliance Dimensions (HxWxD) (mm)	290x230x325 mm
Standy By Display	Indicator Light
Power Cord Length (cm)	100 cm

● = Yes - = No

Making **life easy** through innovative technologies

Tassimo
coffee machines



TYPE	HAPPY TAS10	VIVVY TAS14	SUNY TAS32	CADDY TAS70/TAS75
MODEL/COLOUR	TAS1001GB - PURPLE/WHITE TAS1002GB - BLACK TAS1003GB - RED/BLACK TAS1006GB - RED/WHITE TAS1007GB - CREAM/BLACK	TAS1401GB - PINK TAS1402GB - BLACK TAS1403GB - RED TAS1407GB - CREAM	TAS3202GB - BLACK TAS3203GB - RED TAS3204GB - WHITE	TAS7004GB - WHITE TAS75SE2GB - SILVER TAS7002GB - BLACK
KEY FEATURES				
INTELLIBREW barcode reader	•	•	•	•
One Touch Operation	•	•	•	•
Multi Beverage	•	•	•	•
Removeable Water Tank	•	•	•	•
Transparent Water Tank	•	•	•	•
Water Tank Size	0.7L	0.7L	0.8L	1.2L
Water Level Gauge	•	•	•	•
Colour Alternatives	•	•	•	•
Smart Start	-	-	-	•
Brita Maxtra Water Filter	-	-	-	TAS75SE2GB Only
Power Output	1400 Watts	1300 Watts	1300 Watts	1300 Watts
Pump Pressure	3.3 Bar	3.3 Bar	3.3 Bar	3.3 Bar
Adjustable Cup Stand	•	•	•	•
Removeable Drip Tray	•	•	•	•
Auto Shut-off	•	•	•	•
Automatic Cleaning & Descaling Programme	•	•	•	•
Descal Warning Feature	•	•	•	•
Dishwasher Safe Parts	•	•	•	•
Personalisation Settings	-	-	-	-
Sensor-Touch Interface	-	-	-	-
Appliance Dimensions (HxWxD) (mm)	265x175x305 mm	251x169x310 mm	251x167x305 mm	322x183x270 mm
Standby By Display	Indicator Light	Indicator Light	Indicator Light	Indicator Light
Power Cord Length (cm)	90 cm	90 cm	90 cm	100 cm

• = Yes - = No

Microwaves



OVEN TYPE	MICROWAVE OVEN	MICROWAVE OVEN WITH GRILL	MICROWAVE OVEN	MICROWAVE OVEN WITH GRILL	MICROWAVE OVEN
DESIGN FAMILY	SERIE 2	SERIE 2	SERIE 2	SERIE 2	SERIE 2
MODEL/COLOUR	HMT84M451B - STAINLESS STEEL HMT84M461B - BLACK HMT84M421B - WHITE	HMT75G451B - STAINLESS STEEL	HMT75M451B - STAINLESS STEEL HMT75M461B - BLACK HMT75M421B - WHITE	HMT72G450B - STAINLESS STEEL	HMT72M450B - STAINLESS STEEL
DESIGN					
Electronic controls	•	•	•	-	-
Control Dial	•	•	•	•	•
Retractable control dial	1	1	1	-	-
Push buttons	•	•	•	•	•
Left hinged door	•	•	•	•	•
Door Open Button	•	•	•	•	•
FEATURES					
Electronic clock timer	Red LED	Red LED	Red LED	-	-
Interior lights	1 standard	1 standard	1 standard	1 standard	1 standard
Max. 99 minute timer	•	•	•	-	-
Max. 60 minute timer	-	-	-	•	•
Stainless steel interior	-	•	-	-	-
Laquered interior	•	-	•	•	•
Glass turntable	•	•	•	•	•
PROGRAMMES / FUNCTIONS					
Microwave	•	•	•	•	•
Quartz grill	-	•	-	•	-
Microwave and Grill Combination operation	-	•	-	•	-
Microwave/ grill combination programmes	-	1	-	-	-
Automatic programmes	7	8	7	-	-
Memory function	•	•	•	-	-
PERFORMANCE / TECHNICAL INFORMATION					
Cavity dimensions (HxWxDmm)	215x337x354	194x290x274	194x290x274	194x290x274	194x290x274
Useable oven capacity (L)	25	17	17	17	17
Microwave distribution	Turntable	Turntable	Turntable	Turntable	Turntable
Turntable diameter (mm)	315	245	245	245	245
Maximum microwave power (W)	900	800	800	800	800
Number of microwave power levels	5	5	5	5	5
Grill power (W)	-	1000	-	1000	-
Voltage (V)	230	230	230	230	230
Total connected loading (W)	1450	1270	1270	1270	1270
Cable length (cm)	130	130	130	130	130
GB plug	•	•	•	•	•
STANDARD ACCESSORIES					
Wire rack	-	1	-	1	-
Turntable	1	1	1	1	1

• = Yes - = No

Steam generator irons

Bosch steam generators, making it easy to help you choose the right iron for your needs and lifestyle.

TYPE		STEAM GENERATOR
DESIGN FAMILY		SERIE 8
MODEL		TDS8030GB
Colour	white/black	
Main colour of product	white	
FUNCTIONS		
Vertical steam	●	
Variable steam control	-	
Variable temperature control	●	
LED control light	●	
Water spray function	-	
Water refill beaker	●	
Jet Steam	●	
PERFORMANCE / TECHNICAL INFORMATION		
Connection Rating (W)	2400 Watt max.	
Soleplate	CeraniumGlissée	
Continuous steam	480 g/min	
Shot of steam	120 gr	
Motor Steam	-	
Drip Stop	●	
Secure auto shut-off	●	
i-Temp	●	
Hygiene Function	-	
Anti Calc	Calc'n clean timer, Calc'nClean Perfect, De-scale sponge	
Secure auto shut-off	●	
AntiShine	●	
Length of main cable	180 cm	
Water tank capacity	1300 ml	

• = Yes - = No

Serie 8

+++

TDS8030GB



One setting for all your ironing.

i-Temp uses one optimum temperature to suit all fabrics so now there's no need to pre-sort the laundry. With i-Temp you can save time and carefully look after your clothes. Available on both the VarioComfort and EasyComfort range.

Calc'nClean Perfect is a highly efficient cleaning system – a first for both the steam generator and iron. The fully-automatic cleaning programme for the iron also removes any limescale particles.

Glide your way to perfection.

Our VarioComfort system is easy to use and has a programme for all fabrics. It applies a constant high-pressure steam allowing you to achieve precision ironing faster and easier than ever before. With flexible settings to suit all fabrics, a unique hygiene programme on selected models and a smooth-gliding and scratch-resistant soleplate, you'll get perfect results every time.



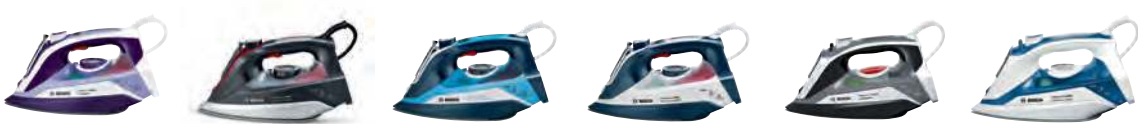
TYPE		STEAM GENERATOR	STEAM GENERATOR	STEAM GENERATOR	STEAM GENERATOR
MODEL NUMBER		TDS6080GB	TDS6081GB	TDS6030GB	TDS4070GB
Colour		White/deep violet	White/deep violet	White/ deep berry	White/berry cream
Main colour of product		white	white	white	White
FUNCTIONS					
Vertical steam		•	•	•	•
Variable steam control		•	•	-	-
Variable temperature control		•	•	-	-
LED control light		•	•	•	•
Water spray function		-	-	-	•
Water refill beaker		•	•	•	•
Jet Steam		•	•	•	-
PERFORMANCE / TECHNICAL INFORMATION					
Connection Rating (W)		2400 Watt max.	2400 Watt max.	2400 Watt max.	2400 Watt max.
Soleplate		CeraniumGlissée	CeraniumGlissée	CeraniumGlissée	CeraniumGlissée
Continuous steam		400 g/min	390 g/min	370 g/min	300 g/min
Shot of steam		120 gr	120 gr	120 gr	120 gr
Motor Steam		-	-	-	-
Drip Stop		•	•	•	•
Secure auto shut-off		•	•	•	•
i-Temp		•	•	•	•
Hygiene Function		•	•	-	-
Anti Calc		Calc'n clean timer, Calc'nClean Perfect, De-scale sponge	Calc'n clean timer, Calc'nClean Perfect, De-scale sponge	Calc'n clean timer, Calc'nClean Perfect	Calc'n clean timer
Secure auto shut-off		•	•	•	•
AntiShine		-	-	-	-
Length of main cable		180 cm	180 cm	180 cm	180 cm
Water tank capacity		1300 ml	1300 ml	1300 ml	1300 ml

• = Yes - = No



TYPE		STEAM GENERATOR	STEAM GENERATOR	STEAM GENERATOR	STEAM GENERATOR
MODEL NUMBER		TDS4040GB	TDS8040GB	TDS6010GB	TDS2140GB
Colour		White/berry cream	white/dark violet	white/night blue/pastel blue	night blue/pastel blue
Main colour of product		White	white	white	blue
FUNCTIONS					
Vertical steam		•	•	•	•
Variable steam control		-	-	-	•
Variable temperature control		-	•	-	-
LED control light		-	•	•	-
Water spray function		•	-	-	•
Water refill beaker		•	•	•	•
Jet Steam		-	•	•	-
PERFORMANCE / TECHNICAL INFORMATION					
Connection Rating (W)		2400 Watt max.	2400 Watt max.	2400 Watt max.	2400 Watt max.
Soleplate		CeraniumGlissée	CeraniumGlissée	CeraniumGlissée	PalladiumGlissée
Continuous steam		270 g/min	500 g/min	350 g/min	210 g/min
Shot of steam		120 gr	120 gr	120 gr	110 gr
Motor Steam		-	-	-	-
Drip Stop		•	•	•	•
Secure auto shut-off		•	•	•	•
i-Temp		•	•	•	•
Hygiene Function		-	•	-	-
Anti Calc		Calc'n clean timer	Calc'n clean timer , Calc'nClean Perfect , De-scale sponge	Calc'n clean timer , Calc'nClean Perfect , De-scale sponge	calc'n clean timer
Secure auto shut-off		•	•	•	•
AntiShine		-	-	-	-
Length of main cable		180 cm	180 cm	180 cm	190 cm
Water tank capacity		1300 ml	1300 ml	1300 ml	1500 ml

Steam irons



TYPE	STEAM IRON	STEAM IRON	STEAM IRON	STEAM IRON	STEAM IRON	STEAM IRON
MODEL NUMBER	TDI9080GB	TDI9020GB	TDI9015GB	TDI9010GB	TDA70EYGB	TDA7060GB
Colour	Deep violet/berry cream	Anthracite metallic/ rosso red	ice blue/magic night blue	White/magic night blue	White/ black	White/smokey blue
Main colour of product	Deep violet	Anthracite metallic	ice blue	White	White	White
FUNCTIONS						
Vertical steam	●	●	●	●	●	●
Variable steam control	●	●	●	●	●	●
Variable temperature control	●	●	●	●	●	●
LED control light	-	-	-	-	-	-
Water spray function	●	●	●	●	●	●
Water refill beaker	●	●	●	●	●	●
Jet Steam	●	●	●	●	●	●
PERFORMANCE / TECHNICAL INFORMATION						
Connection Rating (W)	3120 Watt max.	3120 Watt max.	3000 Watt max.	2800 Watt max.	2400 Watt max.	2800 Watt max.
Soleplate	CeraniumGlissée	CeraniumGlissée	CeraniumGlissée	CeraniumGlissée	CeraniumGlissée	CeraniumGlissée
Continous steam	65 g/min	65 g/min	60 g/min	55 g/min	45 g/min	50 g/min
Shot of steam	220 gr	200gr	200 gr	200gr	200gr	200gr
Motor Steam	●	●	●	●	-	-
Drip Stop	●	●	●	●	●	●
Secure auto shut-off	●	●	●	●	●	●
i-Temp	-	-	●	●	●	●
Hygienie Function	-	-	-	-	-	-
Anti Calc	4AntiCalc feature: four cleaning function with self-clean, calc 'n clean, built-in anti-calc system and descale liquid	4AntiCalc feature: four cleaning function with self-clean, calc 'n clean, built-in anti-calc system and descale liquid	4AntiCalc feature: four cleaning function with self-clean, calc 'n clean, built-in anti-calc system and descale liquid	4AntiCalc feature: four cleaning function with self-clean, calc 'n clean , built-in anti-calc system and descale liquid	3AntiCalc feature: triple cleaning function with self-clean, calc 'n clean and built-in anti-calc system	3AntiCalc feature: triple cleaning function with self-clean, calc 'n clean and built-in anti-calc system
Secure auto shut-off	●	●	●	●	●	●
AntiShine	●	●	●	●	-	-
Length of main cable	300 cm	300 cm	300 cm	300 cm	300 cm	300 cm
Water tank capacity	300 ml	300 ml	300 ml	300 ml	340 ml	340 ml

● = Yes - = No



TYPE	STEAM IRON	STEAM IRON	STEAM IRON	STEAM IRON	STEAM IRON	STEAM IRON
MODEL NUMBER	TDA5085GB	TDA5080GB	TDA5071GB	TDA5070GB	TDA3022GB	TDA3020GB
Colour	Black/tekegrey	Black/ ice Blue	Anthracite/ magic violet	Black/red	Black/tekegrey	Black/tekegrey
Main colour of product	Black	ice blue	magic violet	Black	Black	Black
FUNCTIONS						
Vertical steam	●	●	●	●	●	●
Variable steam control	●	●	●	●	●	●
Variable temperature control	●	●	●	●	●	●
LED control light	-	-	-	-	-	-
Water spray function	●	●	●	●	●	●
Water refill beaker	●	●	●	●	●	●
Jet Steam	-	●	●	●	●	●
PERFORMANCE / TECHNICAL INFORMATION						
Connection Rating (W)	3050 Watt max.	3000 Watt max.	3100 Watt max.	3050 Watt max.	2850 Watt max.	2800 Watt max.
Soleplate	CeraniumGlissée	CeraniumGlissée	CeraniumGlissée	CeraniumGlissée	CeraniumGlissée	CeraniumGlissée
Continous steam	50 g/min	50 g/min	50 g/min	50 g/min	40 g/min	40 g/min
Shot of steam	200gr	200gr	200gr	200gr	210 gr	170 gr
Motor Steam	-	-	-	-	-	-
Drip Stop	●	●	●	●	●	●
Secure auto shut-off	-	-	-	-	-	-
i-Temp	-	-	-	-	-	-
Hygienie Function	-	-	-	-	-	-
Anti Calc	3AntiCalc feature: triple cleaning function with self-clean, calc 'n clean and built-in anti-calc system	3AntiCalc feature: triple cleaning function with self-clean, calc 'n clean and built-in anti-calc system	3AntiCalc feature: triple cleaning function with self-clean, calc 'n clean and built-in anti-calc system	3AntiCalc feature: triple cleaning function with self-clean, calc 'n clean and built-in anti-calc system	3AntiCalc feature: triple cleaning function with self-clean, calc 'n clean and built-in anti-calc system	3AntiCalc feature: triple cleaning function with self-clean, calc 'n clean and built-in anti-calc system
Secure auto shut-off	-	-	-	-	-	-
AntiShine	-	-	-	-	-	-
Length of main cable	300 cm	300 cm	300 cm	300 cm	300 cm	300 cm
Water tank capacity	350 ml	350 ml	350 ml	320 ml	320 ml	320 ml



TYPE	STEAM IRON	STEAM IRON	STEAM IRON	STEAM IRON	STEAM IRON	STEAM IRON
MODEL NUMBER	TDA3017GB	TDA2690GB	TDA2670GB	TDA2651GB	TDA2633GB	TDA2625GB
Colour	Whitie telegrey	White/blue berry	Ice blue/night blue	White / Deep Violet	White/turquoise	White/deep berry
Main colour of product	White	White	Blue	White	White	White
FUNCTIONS						
Vertical steam	●	●	●	●	●	●
Variable steam control	●	●	●	●	●	●
Variable temperature control	●	●	●	●	●	●
LED control light	-	-	-	-	-	-
Water spray function	●	●	●	●	●	●
Water refill beaker	●	●	●	●	●	●
Jet Steam	●	●	●	●	●	-
PERFORMANCE / TECHNICAL INFORMATION						
Connection Rating (W)	2650 Watt max.	2400 Watt max.	2400 Watt max.	2300 Watt max.	2200 Watt max.	2000 Watt max.
Soleplate	CeraniumGlissée	PalladiumGlissée	PalladiumGlissée	PalladiumGlissée	PalladiumGlissée	PalladiumGlissée
Continous steam	40 g/min	30 g/min	25 g/min	25 g/min	30 g/min	25 g/min
Shot of steam	200 gr	170 gr	140 gr	95 gr	90 gr	85 gr
Motor Steam	-	-	-	-	-	-
Drip Stop	●	●	●	●	●	●
Secure auto shut-off	-	-	-	-	-	-
i-Temp	-	-	-	-	-	-
Hygienie Function	-	-	-	-	-	-
Anti Calc	3AntiCalc feature: triple cleaning function with self-clean, calc 'n clean and built-in anti-calc system	3AntiCalc feature: triple cleaning function with self-clean, calc 'n clean and built-in anti-calc system	3AntiCalc feature: triple cleaning function with self-clean, calc 'n clean and built-in anti-calc system	3AntiCalc feature: triple cleaning function with self-clean, calc 'n clean and built-in anti-calc system	3AntiCalc feature: triple cleaning function with self-clean, calc 'n clean and built-in anti-calc system	3AntiCalc feature: triple cleaning function with self-clean, calc 'n clean and built-in anti-calc system
Secure auto shut-off	-	-	-	-	-	-
AntiShine	-	-	-	-	-	-
Length of main cable	200 cm	250 cm	250 cm	250 cm	250 cm	250 cm
Water tank capacity	320 ml	290 ml	290 ml	290 ml	290 ml	290 ml

● = Yes - = No



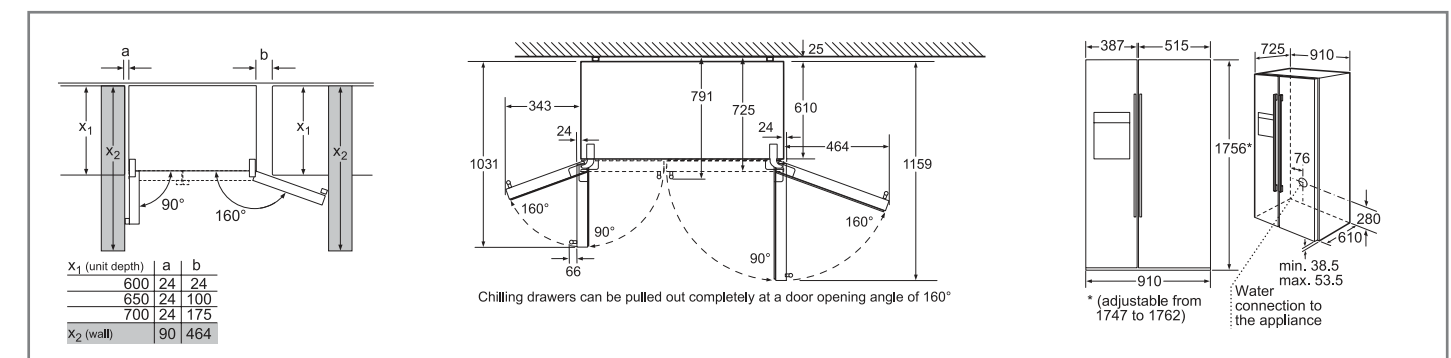
TYPE	STEAM IRON	STEAM IRON	STEAM IRON	STEAM IRON	STEAM IRON
MODEL NUMBER	TDA2623GB	TDA2329GB	TDA2080GB	TDA1070GB	TDA1060GB
Colour	White/green	White/deep berry	Black/rosso red	White/smokey blue	White / Deep Violet
Main colour of product	White	White	Black	White	White
FUNCTIONS					
Vertical steam	●	●	●	●	●
Variable steam control	●	●	●	●	●
Variable temperature control	●	●	●	●	●
LED control light	-	-	-	-	-
Water spray function	●	●	●	●	●
Water refill beaker	●	●	●	●	●
Jet Steam	-	-	-	-	-
PERFORMANCE / TECHNICAL INFORMATION					
Connection Rating (W)	2000 Watt max.	2200 Watt max.	2400 Watt max.	2400 Watt max.	2400 Watt max.
Soleplate	PalladiumGlissée	PalladiumGlissée	PalladiumGlissée	PalladiumGlissée	PalladiumGlissée
Continous steam	25 g/min	22 g/min	35 g/min	30 g/min	30 g/min
Shot of steam	80 gr	70 gr	180 gr	110 gr	100 gr
Motor Steam	-	-	-	-	-
Drip Stop	●	●	●	●	●
Secure auto shut-off	-	-	-	-	-
i-Temp	-	-	-	-	-
Hygienie Function	-	-	-	-	-
Anti Calc	2AntiCalc	3AntiCalc feature: triple cleaning function with self-clean, calc 'n clean and built-in anti-calc system	calc 'n clean	calc 'n clean	3AntiCalc feature: triple cleaning function with self-clean, calc 'n clean and built-in anti-calc system
Secure auto shut-off	-	-	-	-	-
AntiShine	-	-	-	-	-
Length of main cable	250 cm	190 cm	300 cm	300 cm	300 cm
Water tank capacity	290 ml	220 ml	300 ml	300 ml	300 ml

Accessories and product specification guide

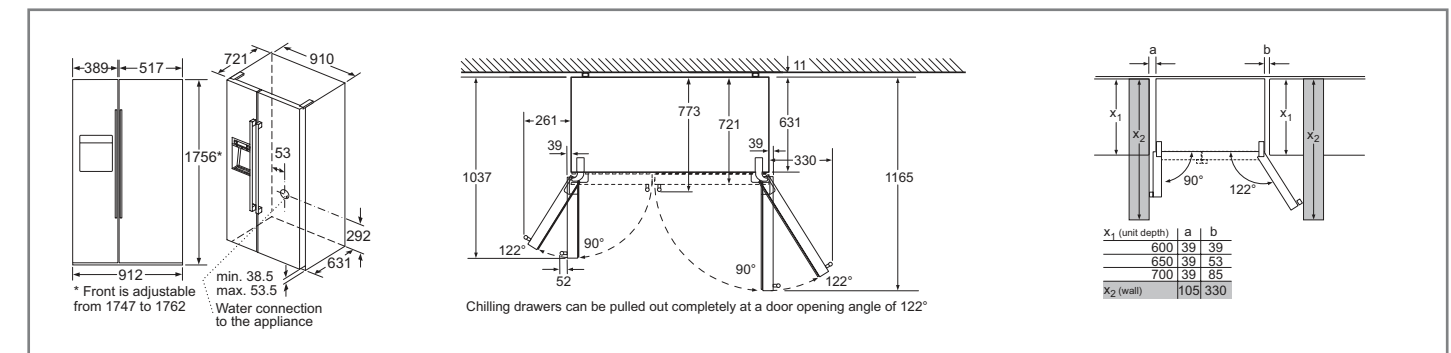
2019

Cooling technical diagrams

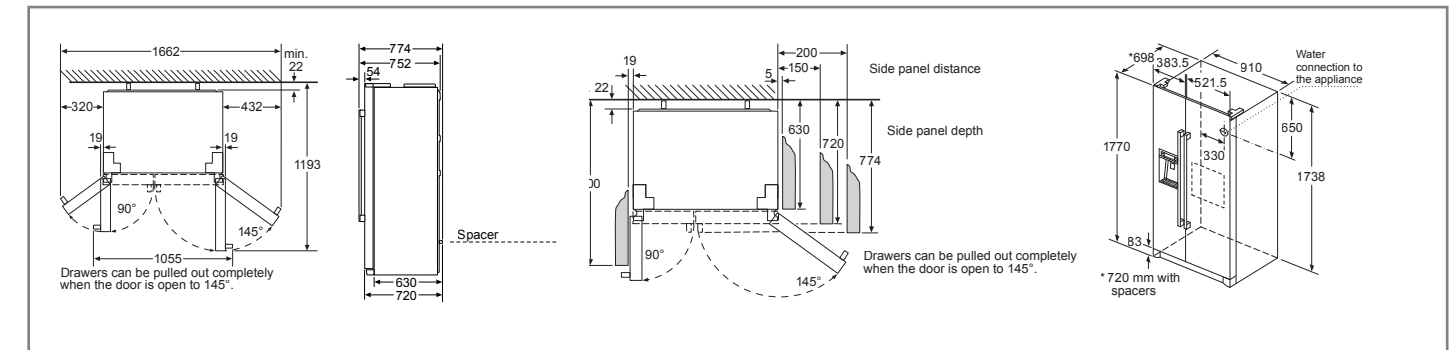
American-style fridge freezer



KAN92LB35G N.B. Doors need to be able to be opened to a minimum of 160° angle to allow the drawers to be fully accessible



KAD92AI20G, KAN92VI35 N.B. Doors need to be able to be opened to a minimum of 122° angle to allow the drawers to be fully accessible










KAG90AI20G, KAD90VI20G, KAI90VI20G, KAD90VB20G

All diagram measurements are in millimetres (mm)

We try to keep up to date with constant technological improvements, so from time to time we may update installation guidelines. Therefore we strongly recommend that you download the latest installation guidelines from www.bosch-home.co.uk. Line drawings are for guidance only, and we recommend that you refer to the latest installation guidelines. Though every care is taken to ensure instructions are correct at the time of printing, Bosch cannot accept responsibility for incorrect planning or installation as a result of the use of these line drawings.

LAUNDRY ACCESSORIES	
Built-under cover	
Model	WMZ20331
Stacking kit	
Model	WTZ20410
Stacking kit (cont)	
Model	WTZ11400
Condenser drainage kit	
Model	WTZ1110
Vent hose	
Model	WTZ1130
Wool Drying Basket	
Model	WM220600

DISHCARE ACCESSORIES			
Cutlery baskets			
Model	SMZ5100	SPZ5100	SZ73100
Hose extension		Wine Glass Holder	
Model	SGZ1010	SMZ5300	
Silver Cassette			
Model	SMZ5002		

LAUNDRY ACCESSORIES		
203cm Joining strips		
Model	KSZ39AW00	KSZ39AL00

Download a copy of our catalogues online at **www.bosch-home.co.uk** or call **0344 892 8979**

Contact Bosch Customer Service

To arrange an engineer visit, obtain product advice or order replacement spare parts or accessories visit **www.bosch-home.co.uk** or call **0344 892 8979**

Republic of Ireland customers should visit **www.bosch-home.ie** to arrange an engineer's visit, or to order spare parts and accessories, or call **(01) 450 2655**



BoschHomeUK



BoschHomeUK

Calls are charged at the basic rate, please check with your telephone service provider for exact charges.

Disclaimer: This brochure is current as from the publication date and supersedes all previous brochures for these products. This brochure should not be regarded as an infallible guide nor as an offer for sale of any particular product. Whilst BSH Home Appliances Ltd believes that all information contained within this brochure is correct at the time of going to print, no representation or warranty, express or implied, is or will be made and no responsibility or liability is or will be accepted by BSH Home Appliances Ltd in relation to the accuracy or completeness of this information and any liability is expressly disclaimed. To the extent permitted by law, BSH Home Appliances Ltd expressly excludes: i) all conditions, warranties and other terms which might otherwise be implied by statute, common law or the law of equity and ii) any liability for any direct, indirect or consequential loss or damage (including, without limitation, damages for loss of business or loss of profits) arising in contract, tort or otherwise from the use of or reliance on any information contained within this brochure or from any action or decision taken as a result of such use or reliance. BSH Home Appliances Ltd reserves the right to modify technical data and all other information contained within this brochure without notice. All rights reserved. No part of this publication may be reproduced in any form or without the prior written permission of BSH Home Appliances Ltd. All colour variations are due to the limitations of the printing process. We recommend a visit to a Bosch dealer to confirm that specifications and colours are to your satisfaction.

This brochure is printed on environment-friendly chlorine-free bleached paper.

April 2019.

BSH Home Appliances Limited
Grand Union House
Old Wolverton Road, Wolverton
Milton Keynes MK12 5PT
www.bosch-home.co.uk

BSH Home Appliances Limited
M50 Business Park
Ballymount, Dublin 12
Tel: 1890 626 041
www.bosch-home.ie